

PRICES ENCLOSURES 2023

Applicable from 13 | 03 | 2023



METALU PLAST

Much more than sport



➤ **Table of contents**

Bipod ball-stops	3
Rectangular ball-stops	3
Ball-stops	6
Gates and doors h. 2 m	15
Tennis fencing	16
Ball-stop accessories	17
Windbreak / Viewbreak	18
Ball-stop nets	19
Handrails	19
Gates and doors h.1.10 m	20
The Eurocode standard	21
Color range	22
General terms and conditions	23

➤ **Shipping costs : consult us**

➤ Enclosures

References	Designation	Sold by	Price 2023 exc VAT
Ball-stop / Bipod posts / Height 13 m			<i>Page 9 of the catalog</i>
PB111610-13	Steel powder-coated bipod End post Ø 102-102 mm - 13 m above ground	Unit	2 814.66 €
PB111611-13	Steel powder-coated bipod Corner post Ø 102-102 mm - 13 m above ground	Unit	2 894.91 €
PB111611-13-R	Steel powder-coated bipod Retention post Ø 102-102 mm - 13 m above ground	Unit	2 894.91 €
PB111612-13	Steel powder-coated bipod Intermediate post Ø 102-102 mm - 13 m above ground	Unit	2 755.21 €
Ball-stop / Bipod posts / Height 12 m			<i>Page 9 of the catalog</i>
PB111610-12	Steel powder-coated bipod End post Ø 102-102 mm - 12 m above ground	Unit	2 660.50 €
PB111611-12	Steel powder-coated bipod Corner post Ø 102-102 mm - 12 m above ground	Unit	2 745.59 €
PB111611-12-R	Steel powder-coated bipod Retention post Ø 102-102 mm - 12 m above ground	Unit	2 745.59 €
PB111612-12	Steel powder-coated bipod Intermediate post Ø 102-102 mm - 12 m above ground	Unit	2 580.08 €
Ball-stop / Bipod posts / Height 11 m			<i>Page 9 of the catalog</i>
PB111610-11	Steel powder-coated bipod End post Ø 102-102 mm - 11 m above ground	Unit	2 136.75 €
PB111611-11	Steel powder-coated bipod Corner post Ø 102-102 mm - 11 m above ground	Unit	2 223.43 €
PB111611-11-R	Steel powder-coated bipod Retention post Ø 102-102 mm - 11 m above ground	Unit	2 223.43 €
PB111612-11	Steel powder-coated bipod Intermediate post Ø 102-102 mm - 11 m above ground	Unit	2 122.27 €
Ball-stop / Bipod posts / Height 10 m			<i>Page 9 of the catalog</i>
PB111610	Steel powder-coated bipod End post Ø 102-90 mm - 10 m above ground	Unit	1 911.75 €
PB111611	Steel powder-coated bipod Corner post Ø 102-90 mm - 10 m above ground	Unit	1 998.59 €
PB111611-R	Steel powder-coated bipod Retention post Ø 102-90 mm - 10 m above ground	Unit	1 978.78 €
PB111612	Steel powder-coated bipod Intermediate post Ø 102-90 mm - 10 m above ground	Unit	1 881.26 €
Ball-stop / Bipod posts / Height 9 m			<i>Page 9 of the catalog</i>
PB111620-09	Steel powder-coated bipod End post Ø 102-90 mm - 9 m above ground	Unit	1 796.13 €
PB111621-09	Steel powder-coated bipod Corner post Ø 102-90 mm - 9 m above ground	Unit	1 878.08 €
PB111621-09-R	Steel powder-coated bipod Retention post Ø 102-90 mm - 9 m above ground	Unit	1 878.08 €
PB111622-09	Steel powder-coated bipod Intermediate post Ø 102-90 mm - 9 m above ground	Unit	1 608.10 €
Ball-stop / Bipod posts / Height 8 m			<i>Page 9 of the catalog</i>
PB111620-08	Steel powder-coated bipod End post Ø 102-90 mm - 8 m above ground	Unit	1 124.64 €
PB111621-08	Steel powder-coated bipod Corner post Ø 102-90 mm - 8 m above ground	Unit	1 209.75 €
PB111621-08-R	Steel powder-coated bipod Retention post Ø 102-90 mm - 8 m above ground	Unit	1 209.75 €
PB111622-08	Steel powder-coated bipod Intermediate post Ø 102-90 mm - 8 m above ground	Unit	1 076.36 €
Ball-stop / Bipod posts / Height 7 m			<i>Page 9 of the catalog</i>
PB111620-07	Steel powder-coated bipod End post Ø 102-90 mm - 7 m above ground	Unit	1 037.80 €
PB111621-07	Steel powder-coated bipod Corner post Ø 102-90 mm - 7 m above ground	Unit	1 116.62 €
PB111621-07-R	Steel powder-coated bipod Retention post Ø 102-90 mm - 7 m above ground	Unit	1 116.62 €
PB111622-07	Steel powder-coated bipod Intermediate post Ø 102-90 mm - 7 m above ground	Unit	991.21 €
Ball-stop / Bipod posts / Height 6 m			<i>Page 9 of the catalog</i>
PB111620	Steel powder-coated bipod End post Ø 102-90 mm - 6 m above ground	Unit	954.27 €
PB111621	Steel powder-coated bipod Corner post Ø 102-90 mm - 6 m above ground	Unit	1 028.21 €
PB111621-R	Steel powder-coated bipod Retention post Ø 102-90 mm - 6 m above ground	Unit	1 028.21 €
PB111622	Steel powder-coated bipod Intermediate post Ø 102-90 mm - 6 m above ground	Unit	910.99 €
Ball-stop / Rectangular posts / Height 13 m			<i>Page 9 of the catalog</i>
PB180610-13	Steel powder-coated End post 180 x 80 x 3 mm - 13 m above ground	Unit	1 389.24 €
PB180611-13	Steel powder-coated Corner post 180 x 80 x 3 mm - 13 m above ground	Unit	1 453.77 €
PB180611-13-R	Steel powder-coated Retention post 180 x 80 x 3 mm - 13 m above ground	Unit	1 453.77 €
PB180612-13	Steel powder-coated Intermediate post 180 x 80 x 3 mm - 13 m above ground	Unit	1 305.87 €
Ball-stop / Rectangular posts / Height 12 m			<i>Page 9 of the catalog</i>
PB180610-12	Steel powder-coated End post 180 x 80 x 3 mm - 12 m above ground	Unit	1 362.53 €
PB180611-12	Steel powder-coated Corner post 180 x 80 x 3 mm - 12 m above ground	Unit	1 427.02 €
PB180611-12-R	Steel powder-coated Retention post 180 x 80 x 3 mm - 12 m above ground	Unit	1 427.02 €
PB180612-12	Steel powder-coated Intermediate post 180 x 80 x 3 mm - 12 m above ground	Unit	1 279.14 €

	References	Designation	Sold by	Price 2023 exc VAT
Ball-stop / Rectangular posts / Height 11 m Page 9 of the catalog				
	PB180610-11	Steel powder-coated End post 180 x 80 x 3 mm - 11 m above ground	Unit	1 326.36 €
	PB180611-11	Steel powder-coated Corner post 180 x 80 x 3 mm - 11 m above ground	Unit	1 392.41 €
	PB180611-11-R	Steel powder-coated Retention post 180 x 80 x 3 mm - 11 m above ground	Unit	1 392.41 €
	PB180612-11	Steel powder-coated Intermediate post 180 x 80 x 3 mm - 11 m above ground	Unit	1 244.53 €
Ball-stop / Rectangular posts / Height 10 m Page 9 of the catalog				
Empty 2 m	PB10R18V2-PMR	Retention post - 10 m above ground - 180 x 80 x 3 mm ZN powder-coated - Empty on lower part - Mesh 25 or 48 mm	Unit	1 230.37 €
	PB10R18V2-PMI	Intermediate post - 10 m above ground - 180 x 80 x 3 mm ZN powder-coated - Empty on lower part - Mesh 25 or 48 mm	Unit	1 079.33 €
	PB10R18V2-PMD	End post - 10 m above ground - 180 x 80 x 3 mm ZN powder-coated - Empty on lower part - Mesh 25 or 48 mm	Unit	1 156.43 €
	PB10R18V2-PMA	Corner post - 10 m above ground - 180 x 80 x 3 mm ZN powder-coated - Empty on lower part - Mesh 25 or 48 mm	Unit	1 230.37 €
	PB10R18V2-GMR	Retention post - 10 m above ground - 180 x 80 x 3 mm ZN powder-coated - Empty on lower part - Mesh 100 or 145 mm	Unit	1 230.37 €
	PB10R18V2-GMI	Intermediate post - 10 m above ground - 180 x 80 x 3 mm ZN powder-coated - Empty on lower part - Mesh 100 or 145 mm	Unit	1 079.33 €
	PB10R18V2-GMD	End post - 10 m above ground - 180 x 80 x 3 mm ZN powder-coated - Empty on lower part - Mesh 100 or 145 mm	Unit	1 156.43 €
	PB10R18V2-GMA	Corner post - 10 m above ground - 180 x 80 x 3 mm ZN powder-coated - Empty on lower part - Mesh 100 or 145 mm	Unit	1 230.37 €
All net	PB10R18TF-PMR	Retention post - 10 m above ground - 180 x 80 x 3 mm ZN powder-coated - All net - Mesh 25 or 48 mm	Unit	1 230.37 €
	PB10R18TF-PMI	Intermediate post - 10 m above ground - 180 x 80 x 3 mm ZN powder-coated - All net - Mesh 25 or 48 mm	Unit	1 079.33 €
	PB10R18TF-PMD	End post - 10 m above ground - 180 x 80 x 3 mm ZN powder-coated - All net - Mesh 25 or 48 mm	Unit	1 156.43 €
	PB10R18TF-PMA	Corner post - 10 m above ground - 180 x 80 x 3 mm ZN powder-coated - All net - Mesh 25 or 48 mm	Unit	1 230.37 €
	PB10R18TF-GMR	Retention post - 10 m above ground - 180 x 80 x 3 mm ZN powder-coated - All net - Mesh 100 or 145 mm	Unit	1 230.37 €
	PB10R18TF-GMI	Intermediate post - 10 m above ground - 180 x 80 x 3 mm ZN powder-coated - All net - Mesh 100 or 145 mm	Unit	1 079.33 €
	PB10R18TF-GMD	End post - 10 m above ground - 180 x 80 x 3 mm ZN powder-coated - All net - Mesh 100 or 145 mm	Unit	1 156.43 €
	PB10R18TF-GMA	Corner post - 10 m above ground - 180 x 80 x 3 mm ZN powder-coated - All net - Mesh 100 or 145 mm	Unit	1 230.37 €
Wire mesh 2 m	PB10R18ST-PMR	Retention post - 10 m above ground - 180 x 80 x 3 mm ZN powder-coated - 2 m height wire mesh on lower part - Mesh 25 or 48 mm	Unit	1 263.50 €
	PB10R18ST-PMI	Intermediate post - 10 m above ground - 180 x 80 x 3 mm ZN powder-coated - 2 m height wire mesh on lower part - Mesh 25 or 48 mm	Unit	1 091.87 €
	PB10R18ST-PMD	End post - 10 m above ground - 180 x 80 x 3 mm ZN powder-coated - 2 m height wire mesh on lower part - Mesh 25 or 48 mm	Unit	1 172.99 €
	PB10R18ST-PMA	Corner post - 10 m above ground - 180 x 80 x 3 mm ZN powder-coated - 2 m height wire mesh on lower part - Mesh 25 or 48 mm	Unit	1 263.50 €
	PB10R18ST-GMR	Retention post - 10 m above ground - 180 x 80 x 3 mm ZN powder-coated - 2 m height wire mesh on lower part - Mesh 100 or 145 mm	Unit	1 263.50 €
	PB10R18ST-GMI	Intermediate post - 10 m above ground - 180 x 80 x 3 mm ZN powder-coated - 2 m height wire mesh on lower part - Mesh 100 or 145 mm	Unit	1 091.87 €
	PB10R18ST-GMD	End post - 10 m above ground - 180 x 80 x 3 mm ZN powder-coated - 2 m height wire mesh on lower part - Mesh 100 or 145 mm	Unit	1 172.99 €
	PB10R18ST-GMA	Corner post - 10 m above ground - 180 x 80 x 3 mm ZN powder-coated - 2 m height wire mesh on lower part - Mesh 100 or 145 mm	Unit	1 263.50 €
Mediterranean panels 2.3 m	PB10R18ME-PMR	Retention post - 10 m above ground - 180 x 80 x 3 mm ZN powder-coated - Mediterranean panels with dB-Stop - Mesh 25 or 48 mm	Unit	1 310.22 €
	PB10R18ME-PMI	Intermediate post - 10 m above ground - 180 x 80 x 3 mm ZN powder-coated - Mediterranean panels with dB-Stop - Mesh 25 or 48 mm	Unit	1 159.19 €
	PB10R18ME-PMD	End post - 10 m above ground - 180 x 80 x 3 mm ZN powder-coated - Mediterranean panels with dB-Stop - Mesh 25 or 48 mm	Unit	1 236.30 €
	PB10R18ME-PMA	Corner post - 10 m above ground - 180 x 80 x 3 mm ZN powder-coated - Mediterranean panels with dB-Stop - Mesh 25 or 48 mm	Unit	1 310.22 €
	PB10R18ME-GMR	Retention post - 10 m above ground - 180 x 80 x 3 mm ZN powder-coated - Mediterranean panels with dB-Stop - Mesh 100 or 145 mm	Unit	1 310.22 €
	PB10R18ME-GMI	Intermediate post - 10 m above ground - 180 x 80 x 3 mm ZN powder-coated - Mediterranean panels with dB-Stop - Mesh 100 or 145 mm	Unit	1 159.19 €
	PB10R18ME-GMD	End post - 10 m above ground - 180 x 80 x 3 mm ZN powder-coated - Mediterranean panels with dB-Stop - Mesh 100 or 145 mm	Unit	1 236.30 €
	PB10R18ME-GMA	Corner post - 10 m above ground - 180 x 80 x 3 mm ZN powder-coated - Mediterranean panels with dB-Stop - Mesh 100 or 145 mm	Unit	1 310.22 €
Mesh 2 m	PB10R18DB-PMR	Retention post - 10 m above ground - 180 x 80 x 3 mm ZN powder-coated - 2 m height dB-Stop panels - Mesh 25 or 48 mm	Unit	1 296.90 €
	PB10R18DB-PMI	Intermediate post - 10 m above ground - 180 x 80 x 3 mm ZN powder-coated - 2 m height dB-Stop panels - Mesh 25 or 48 mm	Unit	1 145.84 €
	PB10R18DB-PMD	End post - 10 m above ground - 180 x 80 x 3 mm ZN powder-coated - 2 m height dB-Stop panels - Mesh 25 or 48 mm	Unit	1 222.95 €
	PB10R18DB-PMA	Corner post - 10 m above ground - 180 x 80 x 3 mm ZN powder-coated - 2 m height dB-Stop panels - Mesh 25 or 48 mm	Unit	1 296.90 €
	PB10R18DB-GMR	Retention post - 10 m above ground - 180 x 80 x 3 mm ZN powder-coated - 2 m height dB-Stop panels - Mesh 100 or 145 mm	Unit	1 296.90 €
	PB10R18DB-GMI	Intermediate post - 10 m above ground - 180 x 80 x 3 mm ZN powder-coated - 2 m height dB-Stop panels - Mesh 100 or 145 mm	Unit	1 145.84 €
	PB10R18DB-GMD	End post - 10 m above ground - 180 x 80 x 3 mm ZN powder-coated - 2 m height dB-Stop panels - Mesh 100 or 145 mm	Unit	1 222.95 €
	PB10R18DB-GMA	Corner post - 10 m above ground - 180 x 80 x 3 mm ZN powder-coated - 2 m height dB-Stop panels - Mesh 100 or 145 mm	Unit	1 296.90 €
Ball-stop / Rectangular posts / Height 9 m Page 9 of the catalog				
	PB180620-09	Steel powder-coated End post 180 x 80 x 3 mm - 9 m above ground	Unit	917.27 €
	PB180621-09	Steel powder-coated Corner post 180 x 80 x 3 mm - 9 m above ground	Unit	1 002.24 €
	PB180621-09-R	Steel powder-coated Retention post 180 x 80 x 3 mm - 9 m above ground	Unit	1 002.24 €
	PB180622-09	Steel powder-coated Intermediate post 180 x 80 x 3 mm - 9 m above ground	Unit	848.06 €
Ball-stop / Rectangular posts / Height 8 m Page 9 of the catalog				
Empty 2 m	PB08R18V2-PMR	Retention post - 8 m above ground - 180 x 80 x 3 mm ZN powder-coated - Empty on lower part - Mesh 25 or 48 mm	Unit	1 002.24 €
	PB08R18V2-PMI	Intermediate post - 8 m above ground - 180 x 80 x 3 mm ZN powder-coated - Empty on lower part - Mesh 25 or 48 mm	Unit	848.06 €
	PB08R18V2-PMD	End post - 8 m above ground - 180 x 80 x 3 mm ZN powder-coated - Empty on lower part - Mesh 25 or 48 mm	Unit	917.27 €
	PB08R18V2-PMA	Corner post - 8 m above ground - 180 x 80 x 3 mm ZN powder-coated - Empty on lower part - Mesh 25 or 48 mm	Unit	1 002.24 €

	References	Designation	Sold by	Price 2023 exc VAT
Empty 2 m	PB08R18V2-GMR	Retention post - 8 m above ground - 180 x 80 x 3 mm ZN powder-coated - Empty on lower part - Mesh 100 or 145 mm	Unit	1 002.24 €
	PB08R18V2-GMI	Intermediate post - 8 m above ground - 180 x 80 x 3 mm ZN powder-coated - Empty on lower part - Mesh 100 or 145 mm	Unit	848.06 €
	PB08R18V2-GMD	End post - 8 m above ground - 180 x 80 x 3 mm ZN powder-coated - Empty on lower part - Mesh 100 or 145 mm	Unit	917.27 €
	PB08R18V2-GMA	Corner post - 8 m above ground - 180 x 80 x 3 mm ZN powder-coated - Empty on lower part - Mesh 100 or 145 mm	Unit	1 002.24 €
All net	PB08R18TF-PMR	Retention post - 8 m above ground - 180 x 80 x 3 mm ZN powder-coated - All net - Mesh 25 or 48 mm	Unit	1 002.24 €
	PB08R18TF-PMI	Intermediate post - 8 m above ground - 180 x 80 x 3 mm ZN powder-coated - All net - Mesh 25 or 48 mm	Unit	848.06 €
	PB08R18TF-PMD	End post - 8 m above ground - 180 x 80 x 3 mm ZN powder-coated - All net - Mesh 25 or 48 mm	Unit	917.27 €
	PB08R18TF-PMA	Corner post - 8 m above ground - 180 x 80 x 3 mm ZN powder-coated - All net - Mesh 25 or 48 mm	Unit	1 002.24 €
Wire mesh 2 m	PB08R18ST-PMR	Retention post - 8 m above ground - 180 x 80 x 3 mm ZN powder-coated - 2 m height wire mesh on lower part - Mesh 25 or 48 mm	Unit	1 035.35 €
	PB08R18ST-PMI	Intermediate post - 8 m above ground - 180 x 80 x 3 mm ZN powder-coated - 2 m height wire mesh on lower part - Mesh 25 or 48 mm	Unit	860.60 €
	PB08R18ST-PMD	End post - 8 m above ground - 180 x 80 x 3 mm ZN powder-coated - 2 m height wire mesh on lower part - Mesh 25 or 48 mm	Unit	933.83 €
	PB08R18ST-PMA	Corner post - 8 m above ground - 180 x 80 x 3 mm ZN powder-coated - 2 m height wire mesh on lower part - Mesh 25 or 48 mm	Unit	1 035.35 €
Mediterranean panels 2.3 m	PB08R18ME-PMR	Retention post - 8 m above ground - 180 x 80 x 3 mm ZN powder-coated - Mediterranean panels with dB-Stop - Mesh 25 or 48 mm	Unit	1 082.10 €
	PB08R18ME-PMI	Intermediate post - 8 m above ground - 180 x 80 x 3 mm ZN powder-coated - Mediterranean panels with dB-Stop - Mesh 25 or 48 mm	Unit	927.91 €
	PB08R18ME-PMD	End post - 8 m above ground - 180 x 80 x 3 mm ZN powder-coated - Mediterranean panels with dB-Stop - Mesh 25 or 48 mm	Unit	997.14 €
	PB08R18ME-PMA	Corner post - 8 m above ground - 180 x 80 x 3 mm ZN powder-coated - Mediterranean panels with dB-Stop - Mesh 25 or 48 mm	Unit	1 082.10 €
Mesh 2 m	PB08R18DB-PMR	Retention post - 8 m above ground - 180 x 80 x 3 mm ZN powder-coated - 2 m height dB-Stop panels - Mesh 25 or 48 mm	Unit	1 068.75 €
	PB08R18DB-PMI	Intermediate post - 8 m above ground - 180 x 80 x 3 mm ZN powder-coated - 2 m height dB-Stop panels - Mesh 25 or 48 mm	Unit	914.58 €
	PB08R18DB-PMD	End post - 8 m above ground - 180 x 80 x 3 mm ZN powder-coated - 2 m height dB-Stop panels - Mesh 25 or 48 mm	Unit	983.82 €
	PB08R18DB-PMA	Corner post - 8 m above ground - 180 x 80 x 3 mm ZN powder-coated - 2 m height dB-Stop panels - Mesh 25 or 48 mm	Unit	1 068.75 €
Ball-stop / Rectangular posts / Height 7 m				<i>Page 9 of the catalog</i>
	PB180620-07	Steel powder-coated End post 180 x 80 x 3 mm - 7 m above ground	Unit	722.20 €
	PB180621-07	Steel powder-coated Corner post 180 x 80 x 3 mm - 7 m above ground	Unit	818.14 €
	PB180621-07-R	Steel powder-coated Retention post 180 x 80 x 3 mm - 7 m above ground	Unit	818.14 €
	PB180622-07	Steel powder-coated Intermediate post 180 x 80 x 3 mm - 7 m above ground	Unit	657.69 €
Ball-stop / Rectangular posts / Height 6 m				<i>Page 9 of the catalog</i>
Empty 2 m	PB06R18V2-TMR	Retention post - 6 m above ground - 180 x 80 x 3 mm ZN powder-coated - Empty on lower part - All mesh	Unit	823.50 €
	PB06R18V2-TMI	Intermediate post - 6 m above ground - 180 x 80 x 3 mm ZN powder-coated - Empty on lower part - All mesh	Unit	647.31 €
	PB06R18V2-TMD	End post - 6 m above ground - 180 x 80 x 3 mm ZN powder-coated - Empty on lower part - All mesh	Unit	719.26 €
	PB06R18V2-TMA	Corner post - 6 m above ground - 180 x 80 x 3 mm ZN powder-coated - Empty on lower part - All mesh	Unit	823.50 €
All net	PB06R18TF-TMR	Retention post - 6 m above ground - 180 x 80 x 3 mm ZN powder-coated - All net - All mesh	Unit	823.50 €
	PB06R18TF-TMI	Intermediate post - 6 m above ground - 180 x 80 x 3 mm ZN powder-coated - All net - All mesh	Unit	647.31 €
	PB06R18TF-TMD	End post - 6 m above ground - 180 x 80 x 3 mm ZN powder-coated - All net - All mesh	Unit	719.26 €
	PB06R18TF-TMA	Corner post - 6 m above ground - 180 x 80 x 3 mm ZN powder-coated - All net - All mesh	Unit	823.50 €
Wire mesh 2 m	PB06R18ST-TMR	Retention post - 6 m above ground - 180 x 80 x 3 mm ZN powder-coated - 2 m height wire mesh on lower part - All mesh	Unit	856.62 €
	PB06R18ST-TMI	Intermediate post - 6 m above ground - 180 x 80 x 3 mm ZN powder-coated - 2 m height wire mesh on lower part - All mesh	Unit	659.85 €
	PB06R18ST-TMD	End post - 6 m above ground - 180 x 80 x 3 mm ZN powder-coated - 2 m height wire mesh on lower part - All mesh	Unit	735.82 €
	PB06R18ST-TMA	Corner post - 6 m above ground - 180 x 80 x 3 mm ZN powder-coated - 2 m height wire mesh on lower part - All mesh	Unit	856.62 €
Mediterranean panels 2.3 m	PB06R18ME-TMR	Retention post - 6 m above ground - 180 x 80 x 3 mm ZN powder-coated - Mediterranean panels with dB-Stop - All mesh	Unit	903.35 €
	PB06R18ME-TMI	Intermediate post - 6 m above ground - 180 x 80 x 3 mm ZN powder-coated - Mediterranean panels with dB-Stop - All mesh	Unit	727.18 €
	PB06R18ME-TMD	End post - 6 m above ground - 180 x 80 x 3 mm ZN powder-coated - Mediterranean panels with dB-Stop - All mesh	Unit	799.12 €
	PB06R18ME-TMA	Corner post - 6 m above ground - 180 x 80 x 3 mm ZN powder-coated - Mediterranean panels with dB-Stop - All mesh	Unit	903.35 €

	References	Designation	Sold by	Price 2023 exc VAT
Mesh 2 m	PB06R18DB-TMR	Retention post - 6 m above ground - 180 x 80 x 3 mm ZN powder-coated - 2 m height dB-Stop panels - All mesh	Unit	890.02 €
	PB06R18DB-TMI	Intermediate post - 6 m above ground - 180 x 80 x 3 mm ZN powder-coated - 2 m height dB-Stop panels - All mesh	Unit	713.85 €
	PB06R18DB-TMD	End post - 6 m above ground - 180 x 80 x 3 mm ZN powder-coated - 2 m height dB-Stop panels - All mesh	Unit	785.79 €
	PB06R18DB-TMA	Corner post - 6 m above ground - 180 x 80 x 3 mm ZN powder-coated - 2 m height dB-Stop panels - All mesh	Unit	890.02 €
Ball-stop / Rectangular posts / Height 5 m				Page 9 of the catalog
	PB180620-05	Steel powder-coated End post 180 x 80 x 3 mm - 5 m above ground	Unit	719.26 €
	PB180621-05	Steel powder-coated Corner post 180 x 80 x 3 mm - 5 m above ground	Unit	823.50 €
	PB180621-05-R	Steel powder-coated Retention post 180 x 80 x 3 mm - 5 m above ground	Unit	823.50 €
	PB180622-05	Steel powder-coated Intermediate post 180 x 80 x 3 mm - 5 m above ground	Unit	647.31 €
Ball-stop / Posts / Height 10 m				Page 10 of the catalog
Empty 2 m	PB10114V2-GMR	Retention post - 10 m above ground - Ø 114 x 3 mm ZN powder-coated - Empty on lower part - Mesh 100 or 145 mm	Unit	702.39 €
	PB10114V2-GMI	Intermediate post - 10 m above ground - Ø 114 x 3 mm ZN powder-coated - Empty on lower part - Mesh 100 or 145 mm	Unit	615.53 €
	PB10114V2-GMD	End post - 10 m above ground - Ø 114 x 3 mm ZN powder-coated - Empty on lower part - Mesh 100 or 145 mm	Unit	659.89 €
	PB10114V2-GMA	Corner post - 10 m above ground - Ø 114 x 3 mm ZN powder-coated - Empty on lower part - Mesh 100 or 145 mm	Unit	702.39 €
All net	PB10114TF-GMR	Retention post - 10 m above ground - Ø 114 x 3 mm ZN powder-coated - All net - Mesh 100 or 145 mm	Unit	702.39 €
	PB10114TF-GMI	Intermediate post - 10 m above ground - Ø 114 x 3 mm ZN powder-coated - All net - Mesh 100 or 145 mm	Unit	615.53 €
	PB10114TF-GMD	End post - 10 m above ground - Ø 114 x 3 mm ZN powder-coated - All net - Mesh 100 or 145 mm	Unit	659.89 €
Wire mesh 2 m	PB10114TF-GMA	Corner post - 10 m above ground - Ø 114 x 3 mm ZN powder-coated - All net - Mesh 100 or 145 mm	Unit	702.39 €
	PB10114ST-GMR	Retention post - 10 m above ground - Ø 114 x 3 mm ZN powder-coated - 2 m height wire mesh on lower part - Mesh 100 or 145 mm	Unit	735.51 €
	PB10114ST-GMI	Intermediate post - 10 m above ground - Ø 114 x 3 mm ZN powder-coated - 2 m height wire mesh on lower part - Mesh 100 or 145 mm	Unit	628.07 €
	PB10114ST-GMD	End post - 10 m above ground - Ø 114 x 3 mm ZN powder-coated - 2 m height wire mesh on lower part - Mesh 100 or 145 mm	Unit	676.45 €
Mediterranean panels 2.3 m	PB10114ST-GMA	Corner post - 10 m above ground - Ø 114 x 3 mm ZN powder-coated - 2 m height wire mesh on lower part - Mesh 100 or 145 mm	Unit	735.51 €
	PB10114ME-GMR	Retention post - 10 m above ground - Ø 114 x 3 mm ZN powder-coated - Mediterranean panels with dB-Stop - Mesh 100 or 145 mm	Unit	782.22 €
	PB10114ME-GMI	Intermediate post - 10 m above ground - Ø 114 x 3 mm ZN powder-coated - Mediterranean panels with dB-Stop - Mesh 100 or 145 mm	Unit	695.36 €
	PB10114ME-GMD	End post - 10 m above ground - Ø 114 x 3 mm ZN powder-coated - Mediterranean panels with dB-Stop - Mesh 100 or 145 mm	Unit	739.73 €
Mesh 2 m	PB10114ME-GMA	Corner post - 10 m above ground - Ø 114 x 3 mm ZN powder-coated - Mediterranean panels with dB-Stop - Mesh 100 or 145 mm	Unit	782.22 €
	PB10114DB-GMR	Retention post - 10 m above ground - Ø 114 x 3 mm ZN powder-coated - 2 m height dB-Stop panels - Mesh 100 or 145 mm	Unit	768.91 €
	PB10114DB-GMI	Intermediate post - 10 m above ground - Ø 114 x 3 mm ZN powder-coated - 2 m height dB-Stop panels - Mesh 100 or 145 mm	Unit	682.04 €
	PB10114DB-GMD	End post - 10 m above ground - Ø 114 x 3 mm ZN powder-coated - 2 m height dB-Stop panels - Mesh 100 or 145 mm	Unit	726.41 €
PB10114DB-GMA	Corner post - 10 m above ground - Ø 114 x 3 mm ZN powder-coated - 2 m height dB-Stop panels - Mesh 100 or 145 mm	Unit	768.91 €	
Ball-stop / Posts / Height 9 m				Page 10 of the catalog
Empty 2 m	PB09114V2-GMR	Retention post - 9 m above ground - Ø 114 x 3 mm ZN powder-coated - Empty on lower part - Mesh 100 or 145 mm	Unit	660.80 €
	PB09114V2-GMI	Intermediate post - 9 m above ground - Ø 114 x 3 mm ZN powder-coated - Empty on lower part - Mesh 100 or 145 mm	Unit	497.50 €
	PB09114V2-GMD	End post - 9 m above ground - Ø 114 x 3 mm ZN powder-coated - Empty on lower part - Mesh 100 or 145 mm	Unit	564.28 €
	PB09114V2-GMA	Corner post - 9 m above ground - Ø 114 x 3 mm ZN powder-coated - Empty on lower part - Mesh 100 or 145 mm	Unit	660.80 €
All net	PB09114TF-GMR	Retention post - 9 m above ground - Ø 114 x 3 mm ZN powder-coated - All net - Mesh 100 or 145 mm	Unit	660.80 €
	PB09114TF-GMI	Intermediate post - 9 m above ground - Ø 114 x 3 mm ZN powder-coated - All net - Mesh 100 or 145 mm	Unit	497.50 €
	PB09114TF-GMD	End post - 9 m above ground - Ø 114 x 3 mm ZN powder-coated - All net - Mesh 100 or 145 mm	Unit	564.28 €
Wire mesh 2 m	PB09114TF-GMA	Corner post - 9 m above ground - Ø 114 x 3 mm ZN powder-coated - All net - Mesh 100 or 145 mm	Unit	660.80 €
	PB09114ST-GMR	Retention post - 9 m above ground - Ø 114 x 3 mm ZN powder-coated - 2 m height wire mesh on lower part - Mesh 100 or 145 mm	Unit	693.62 €
	PB09114ST-GMI	Intermediate post - 9 m above ground - Ø 114 x 3 mm ZN powder-coated - 2 m height wire mesh on lower part - Mesh 100 or 145 mm	Unit	510.05 €
	PB09114ST-GMD	End post - 9 m above ground - Ø 114 x 3 mm ZN powder-coated - 2 m height wire mesh on lower part - Mesh 100 or 145 mm	Unit	580.84 €
Mediterranean panels 2.3 m	PB09114ST-GMA	Corner post - 9 m above ground - Ø 114 x 3 mm ZN powder-coated - 2 m height wire mesh on lower part - Mesh 100 or 145 mm	Unit	693.91 €
	PB09114ME-GMR	Retention post - 9 m above ground - Ø 114 x 3 mm ZN powder-coated - Mediterranean panels with dB-Stop - Mesh 100 or 145 mm	Unit	740.63 €
	PB09114ME-GMI	Intermediate post - 9 m above ground - Ø 114 x 3 mm ZN powder-coated - Mediterranean panels with dB-Stop - Mesh 100 or 145 mm	Unit	577.37 €
	PB09114ME-GMD	End post - 9 m above ground - Ø 114 x 3 mm ZN powder-coated - Mediterranean panels with dB-Stop - Mesh 100 or 145 mm	Unit	644.14 €
Mesh 2 m	PB09114ME-GMA	Corner post - 9 m above ground - Ø 114 x 3 mm ZN powder-coated - Mediterranean panels with dB-Stop - Mesh 100 or 145 mm	Unit	740.63 €
	PB09114DB-GMR	Retention post - 9 m above ground - Ø 114 x 3 mm ZN powder-coated - 2 m height dB-Stop panels - Mesh 100 or 145 mm	Unit	727.31 €
	PB09114DB-GMI	Intermediate post - 9 m above ground - Ø 114 x 3 mm ZN powder-coated - 2 m height dB-Stop panels - Mesh 100 or 145 mm	Unit	564.03 €
	PB09114DB-GMD	End post - 9 m above ground - Ø 114 x 3 mm ZN powder-coated - 2 m height dB-Stop panels - Mesh 100 or 145 mm	Unit	630.82 €
PB09114DB-GMA	Corner post - 9 m above ground - Ø 114 x 3 mm ZN powder-coated - 2 m height dB-Stop panels - Mesh 100 or 145 mm	Unit	727.31 €	
Ball-stop / Posts / Height 8 m				Page 10 of the catalog
Empty 2 m	PB08114V2-GMR	Retention post - 8 m above ground - Ø 114 x 3 mm ZN powder-coated - Empty on lower part - Mesh 100 or 145 mm	Unit	636.25 €
	PB08114V2-GMI	Intermediate post - 8 m above ground - Ø 114 x 3 mm ZN powder-coated - Empty on lower part - Mesh 100 or 145 mm	Unit	472.97 €
	PB08114V2-GMD	End post - 8 m above ground - Ø 114 x 3 mm ZN powder-coated - Empty on lower part - Mesh 100 or 145 mm	Unit	539.76 €
	PB08114V2-GMA	Corner post - 8 m above ground - Ø 114 x 3 mm ZN powder-coated - Empty on lower part - Mesh 100 or 145 mm	Unit	636.25 €
	PB08102V2-GMR	Retention post - 8 m above ground - Ø 101.6 x 2.5 mm ZN powder-coated - All net - Mesh 100 or 145 mm	Unit	540.30 €

	References	Designation	Sold by	Price 2023 exc VAT	
Empty 2 m	PB08102V2-GMI	Intermediate post - 8 m above ground - Ø 101.6 x 2.5 mm ZN powder-coated - All net - Mesh 100 or 145 mm	Unit	354.06 €	
	PB08102V2-GMD	End post - 8 m above ground - Ø 101.6 x 2.5 mm ZN powder-coated - All net - Mesh 100 or 145 mm	Unit	451.74 €	
	PB08102V2-GMA	Corner post - 8 m above ground - Ø 101.6 x 2.5 mm ZN powder-coated - All net - Mesh 100 or 145 mm	Unit	540.30 €	
All net	PB08114TF-GMR	Retention post - 8 m above ground - Ø 114 x 3 mm ZN powder-coated - 2 m height wire mesh on lower part - Mesh 100 or 145 mm	Unit	636.25 €	
	PB08114TF-GMI	Intermediate post - 8 m above ground - Ø 114 x 3 mm ZN powder-coated - 2 m height wire mesh on lower part - Mesh 100 or 145 mm	Unit	472.97 €	
	PB08114TF-GMD	End post - 8 m above ground - Ø 114 x 3 mm ZN powder-coated - 2 m height wire mesh on lower part - Mesh 100 or 145 mm	Unit	539.76 €	
	PB08114TF-GMA	Corner post - 8 m above ground - Ø 114 x 3 mm ZN powder-coated - 2 m height wire mesh on lower part - Mesh 100 or 145 mm	Unit	636.25 €	
	PB08102TF-GMR	Retention post - 8 m above ground - Ø 114 x 2.5 mm ZN powder-coated - Mediterranean panels with dB-Stop - Mesh 100 or 145 mm	Unit	540.30 €	
	PB08102TF-GMI	Intermediate post - 8 m above ground - Ø 114 x 2.5 mm ZN powder-coated - Mediterranean panels with dB-Stop - Mesh 100 or 145 mm	Unit	354.06 €	
Wire mesh 2 m	PB08102TF-GMD	End post - 8 m above ground - Ø 114 x 2.5 mm ZN powder-coated - Mediterranean panels with dB-Stop - Mesh 100 or 145 mm	Unit	451.74 €	
	PB08102TF-GMA	Corner post - 8 m above ground - Ø 114 x 2.5 mm ZN powder-coated - Mediterranean panels with dB-Stop - Mesh 100 or 145 mm	Unit	540.30 €	
	PB08114ST-GMR	Retention post - 8 m above ground - Ø 114 x 3 mm ZN powder-coated - 2 m height dB-Stop panels - Mesh 100 or 145 mm	Unit	669.37 €	
	PB08114ST-GMI	Intermediate post - 8 m above ground - Ø 114 x 3 mm ZN powder-coated - 2 m height dB-Stop panels - Mesh 100 or 145 mm	Unit	485.51 €	
	PB08114ST-GMD	End post - 8 m above ground - Ø 114 x 3 mm ZN powder-coated - 2 m height dB-Stop panels - Mesh 100 or 145 mm	Unit	556.32 €	
	PB08114ST-GMA	Corner post - 8 m above ground - Ø 114 x 3 mm ZN powder-coated - 2 m height dB-Stop panels - Mesh 100 or 145 mm	Unit	669.37 €	
Mediterranean panels 2.3 m	PB08102ST-GMR	Retention post - 8 m above ground - Ø 101.6 x 2.5 mm ZN powder-coated - Empty on lower part - Mesh 100 or 145 mm	Unit	573.43 €	
	PB08102ST-GMI	Intermediate post - 8 m above ground - Ø 101.6 x 2.5 mm ZN powder-coated - Empty on lower part - Mesh 100 or 145 mm	Unit	366.59 €	
	PB08102ST-GMD	End post - 8 m above ground - Ø 101.6 x 2.5 mm ZN powder-coated - Empty on lower part - Mesh 100 or 145 mm	Unit	468.31 €	
	PB08102ST-GMA	Corner post - 8 m above ground - Ø 101.6 x 2.5 mm ZN powder-coated - Empty on lower part - Mesh 100 or 145 mm	Unit	573.43 €	
	PB08114ME-GMR	Retention post - 8 m above ground - Ø 114 x 3 mm ZN powder-coated - Mediterranean panels with dB-Stop - Mesh 100 or 145 mm	Unit	716.10 €	
	PB08114ME-GMI	Intermediate post - 8 m above ground - Ø 114 x 3 mm ZN powder-coated - Mediterranean panels with dB-Stop - Mesh 100 or 145 mm	Unit	552.82 €	
Mesh 2 m	PB08114ME-GMD	End post - 8 m above ground - Ø 114 x 3 mm ZN powder-coated - Mediterranean panels with dB-Stop - Mesh 100 or 145 mm	Unit	619.61 €	
	PB08114ME-GMA	Corner post - 8 m above ground - Ø 114 x 35 mm ZN powder-coated - Mediterranean panels with dB-Stop - Mesh 100 or 145 mm	Unit	716.10 €	
	PB08102ME-GMD	End post - 8 m above ground - Ø 101.6 x 2.5 mm ZN powder-coated - 2 m height dB-Stop panels - Mesh 100 or 145 mm	Unit	620.16 €	
	PB08102ME-GMA	Corner post - 8 m above ground - Ø 101.6 x 2.5 mm ZN powder-coated - 2 m height dB-Stop panels - Mesh 100 or 145 mm	Unit	433.89 €	
	PB08102ME-GMR	Retention post - 8 m above ground - Ø 101.6 x 2.5 mm ZN powder-coated - 2 m height dB-Stop panels - Mesh 100 or 145 mm	Unit	531.61 €	
	PB08102ME-GMI	Intermediate post - 8 m above ground - Ø 101.6 x 2.5 mm ZN powder-coated - 2 m height dB-Stop panels - Mesh 100 or 145 mm	Unit	620.16 €	
Ball-stop / Posts / Height 7 m	PB08114DB-GMR	Retention post - 8 m above ground - Ø 114 x 3 mm ZN powder-coated - All net - Mesh 100 or 145 mm	Unit	702.78 €	
	PB08114DB-GMI	Intermediate post - 8 m above ground - Ø 114 x 3 mm ZN powder-coated - All net - Mesh 100 or 145 mm	Unit	526.96 €	
	PB08114DB-GMD	End post - 8 m above ground - Ø 114 x 3 mm ZN powder-coated - All net - Mesh 100 or 145 mm	Unit	606.28 €	
	PB08114DB-GMA	Corner post - 8 m above ground - Ø 114 x 3 mm ZN powder-coated - All net - Mesh 100 or 145 mm	Unit	702.78 €	
	PB08102DB-GMR	Retention post - 8 m above ground - Ø 101.6 x 2.5 mm ZN powder-coated - 2 m height wire mesh on lower part - Mesh 100 or 145 mm	Unit	606.82 €	
	PB08102DB-GMI	Intermediate post - 8 m above ground - Ø 101.6 x 2.5 mm ZN powder-coated - 2 m height wire mesh on lower part - Mesh 100 or 145 mm	Unit	420.57 €	
Empty 2 m	PB08102DB-GMD	End post - 8 m above ground - Ø 101.6 x 2.5 mm ZN powder-coated - 2 m height wire mesh on lower part - Mesh 100 or 145 mm	Unit	518.28 €	
	PB08102DB-GMA	Corner post - 8 m above ground - Ø 101.6 x 2.5 mm ZN powder-coated - 2 m height wire mesh on lower part - Mesh 100 or 145 mm	Unit	606.82 €	
	Ball-stop / Posts / Height 7 m				<i>Page 10 of the catalog</i>
	PB07114V2-PMR	Retention post - 7 m above ground - Ø 114 x 3 mm ZN powder-coated - Empty on lower part - Mesh 25 or 48 mm	Unit	569.69 €	
	PB07114V2-PMI	Intermediate post - 7 m above ground - Ø 114 x 3 mm ZN powder-coated - Empty on lower part - Mesh 25 or 48 mm	Unit	419.30 €	
	PB07114V2-PMD	End post - 7 m above ground - Ø 114 x 3 mm ZN powder-coated - Empty on lower part - Mesh 25 or 48 mm	Unit	480.92 €	
	PB07114V2-PMA	Corner post - 7 m above ground - Ø 114 x 3 mm ZN powder-coated - Empty on lower part - Mesh 25 or 48 mm	Unit	569.69 €	
	PB07114V2-GMR	Retention post - 7 m above ground - Ø 114 x 3 mm ZN powder-coated - Empty on lower part - Mesh 100 or 145 mm	Unit	569.69 €	
	PB07114V2-GMI	Intermediate post - 7 m above ground - Ø 114 x 3 mm ZN powder-coated - Empty on lower part - Mesh 100 or 145 mm	Unit	419.30 €	
	PB07114V2-GMD	End post - 7 m above ground - Ø 114 x 3 mm ZN powder-coated - Empty on lower part - Mesh 100 or 145 mm	Unit	480.92 €	
	PB07114V2-GMA	Corner post - 7 m above ground - Ø 114 x 3 mm ZN powder-coated - Empty on lower part - Mesh 100 or 145 mm	Unit	569.69 €	
	PB07102V2-GMR	Retention post - 7 m above ground - Ø 101.6 x 2.5 mm ZN powder-coated - Empty on lower part - Mesh 100 or 145 mm	Unit	503.36 €	
	PB07102V2-GMI	Intermediate post - 7 m above ground - Ø 101.6 x 2.5 mm ZN powder-coated - Empty on lower part - Mesh 100 or 145 mm	Unit	320.84 €	
	PB07102V2-GMD	End post - 7 m above ground - Ø 101.6 x 2.5 mm ZN powder-coated - Empty on lower part - Mesh 100 or 145 mm	Unit	420.46 €	
	PB07102V2-GMA	Corner post - 7 m above ground - Ø 101.6 x 2.5 mm ZN powder-coated - Empty on lower part - Mesh 100 or 145 mm	Unit	503.36 €	
All net	PB07090V2-GMR	Retention post - 7 m above ground - Ø 88.9 x 2 mm ZN powder-coated - Empty on lower part - Mesh 100 or 145 mm	Unit	400.38 €	
	PB07090V2-GMI	Intermediate post - 7 m above ground - Ø 88.9 x 2 mm ZN powder-coated - Empty on lower part - Mesh 100 or 145 mm	Unit	249.98 €	
	PB07090V2-GMD	End post - 7 m above ground - Ø 88.9 x 2 mm ZN powder-coated - Empty on lower part - Mesh 100 or 145 mm	Unit	311.62 €	
	PB07090V2-GMA	Corner post - 7 m above ground - Ø 88.9 x 2 mm ZN powder-coated - Empty on lower part - Mesh 100 or 145 mm	Unit	400.38 €	
	PB07114TF-PMR	Retention post - 7 m above ground - Ø 114 x 3 mm ZN powder-coated - All net - Mesh 25 or 48 mm	Unit	569.69 €	
	PB07114TF-PMI	Intermediate post - 7 m above ground - Ø 114 x 3 mm ZN powder-coated - All net - Mesh 25 or 48 mm	Unit	419.30 €	
PB07114TF-PMD	End post - 7 m above ground - Ø 114 x 3 mm ZN powder-coated - All net - Mesh 25 or 48 mm	Unit	480.92 €		
PB07114TF-PMA	Corner post - 7 m above ground - Ø 114 x 3 mm ZN powder-coated - All net - Mesh 25 or 48 mm	Unit	569.69 €		
PB07114TF-GMR	Retention post - 7 m above ground - Ø 114 x 3 mm ZN powder-coated - All net - Mesh 100 or 145 mm	Unit	569.69 €		

	References	Designation	Sold by	Price 2023 exc VAT
All net	PB07114TF-GMI	Intermediate post - 7 m above ground - Ø 114 x 3 mm ZN powder-coated - All net - Mesh 100 or 145 mm	Unit	419.30 €
	PB07114TF-GMD	End post - 7 m above ground - Ø 114 x 3 mm ZN powder-coated - All net - Mesh 100 or 145 mm	Unit	480.92 €
	PB07114TF-GMA	Corner post - 7 m above ground - Ø 114 x 3 mm ZN powder-coated - All net - Mesh 100 or 145 mm	Unit	569.69 €
	PB07102TF-GMR	Retention post - 7 m above ground - Ø 101.6 x 2.5 mm ZN powder-coated - All net - Mesh 100 or 145 mm	Unit	503.36 €
	PB07102TF-GMI	Intermediate post - 7 m above ground - Ø 101.6 x 2.5 mm ZN powder-coated - All net - Mesh 100 or 145 mm	Unit	320.84 €
	PB07102TF-GMD	End post - 7 m above ground - Ø 101.6 x 2.5 mm ZN powder-coated - All net - Mesh 100 or 145 mm	Unit	420.46 €
	PB07102TF-GMA	Corner post - 7 m above ground - Ø 101.6 x 2.5 mm ZN powder-coated - All net - Mesh 100 or 145 mm	Unit	503.36 €
	PB07090TF-GMR	Retention post - 7 m above ground - Ø 88.9 x 2 mm ZN powder-coated - All net - Mesh 100 or 145 mm	Unit	400.38 €
	PB07090TF-GMI	Intermediate post - 7 m above ground - Ø 88.9 x 2 mm ZN powder-coated - All net - Mesh 100 or 145 mm	Unit	249.98 €
	PB07090TF-GMD	End post - 7 m above ground - Ø 88.9 x 2 mm ZN powder-coated - All net - Mesh 100 or 145 mm	Unit	311.62 €
Wire mesh 2 m	PB07090TF-GMA	Corner post - 7 m above ground - Ø 88.9 x 2 mm ZN powder-coated - All net - Mesh 100 or 145 mm	Unit	400.38 €
	PB07114ST-PMR	Retention post - 7 m above ground - Ø 114 x 3 mm ZN powder-coated - 2 m height wire mesh on lower part - Mesh 25 or 48 mm	Unit	602.81 €
	PB07114ST-PMI	Intermediate post - 7 m above ground - Ø 114 x 3 mm ZN powder-coated - 2 m height wire mesh on lower part - Mesh 25 or 48 mm	Unit	431.84 €
	PB07114ST-PMD	End post - 7 m above ground - Ø 114 x 3 mm ZN powder-coated - 2 m height wire mesh on lower part - Mesh 25 or 48 mm	Unit	497.48 €
	PB07114ST-PMA	Corner post - 7 m above ground - Ø 114 x 3 mm ZN powder-coated - 2 m height wire mesh on lower part - Mesh 25 or 48 mm	Unit	602.81 €
	PB07114ST-GMR	Retention post - 7 m above ground - Ø 114 x 3 mm ZN powder-coated - 2 m height wire mesh on lower part - Mesh 100 or 145 mm	Unit	602.81 €
	PB07114ST-GMI	Intermediate post - 7 m above ground - Ø 114 x 3 mm ZN powder-coated - 2 m height wire mesh on lower part - Mesh 100 or 145 mm	Unit	431.84 €
	PB07114ST-GMD	End post - 7 m above ground - Ø 114 x 3 mm ZN powder-coated - 2 m height wire mesh on lower part - Mesh 100 or 145 mm	Unit	497.48 €
	PB07114ST-GMA	Corner post - 7 m above ground - Ø 114 x 3 mm ZN powder-coated - 2 m height wire mesh on lower part - Mesh 100 or 145 mm	Unit	602.81 €
	PB07102ST-GMR	Retention post - 7 m above ground - Ø 101.6 x 2.5 mm ZN powder-coated - 2 m height wire mesh on lower part - Mesh 100 or 145 mm	Unit	536.46 €
Mediterranean panels 2.3 m	PB07102ST-GMI	Intermediate post - 7 m above ground - Ø 101.6 x 2.5 mm ZN powder-coated - 2 m height wire mesh on lower part - Mesh 100 or 145 mm	Unit	333.38 €
	PB07102ST-GMD	End post - 7 m above ground - Ø 101.6 x 2.5 mm ZN powder-coated - 2 m height wire mesh on lower part - Mesh 100 or 145 mm	Unit	437.02 €
	PB07102ST-GMA	Corner post - 7 m above ground - Ø 101.6 x 2.5 mm ZN powder-coated - 2 m height wire mesh on lower part - Mesh 100 or 145 mm	Unit	536.46 €
	PB07090ST-GMR	Retention post - 7 m above ground - Ø 88.9 x 2 mm ZN powder-coated - 2 m height wire mesh on lower part - Mesh 100 or 145 mm	Unit	433.50 €
	PB07090ST-GMI	Intermediate post - 7 m above ground - Ø 88.9 x 2 mm ZN powder-coated - 2 m height wire mesh on lower part - Mesh 100 or 145 mm	Unit	262.52 €
	PB07090ST-GMD	End post - 7 m above ground - Ø 88.9 x 2 mm ZN powder-coated - 2 m height wire mesh on lower part - Mesh 100 or 145 mm	Unit	328.18 €
	PB07090ST-GMA	Corner post - 7 m above ground - Ø 88.9 x 2 mm ZN powder-coated - 2 m height wire mesh on lower part - Mesh 100 or 145 mm	Unit	433.50 €
	PB07114ME-PMR	Retention post - 7 m above ground - Ø 114 x 3 mm ZN powder-coated - Mediterranean panels with dB-Stop - Mesh 25 or 48 mm	Unit	649.55 €
	PB07114ME-PMI	Intermediate post - 7 m above ground - Ø 114 x 3 mm ZN powder-coated - Mediterranean panels with dB-Stop - Mesh 25 or 48 mm	Unit	499.14 €
	PB07114ME-PMD	End post - 7 m above ground - Ø 114 x 3 mm ZN powder-coated - Mediterranean panels with dB-Stop - Mesh 25 or 48 mm	Unit	560.79 €
Mesh 2 m	PB07114ME-PMA	Corner post - 7 m above ground - Ø 114 x 3 mm ZN powder-coated - Mediterranean panels with dB-Stop - Mesh 25 or 48 mm	Unit	649.55 €
	PB07114ME-GMR	Retention post - 7 m above ground - Ø 114 x 3 mm ZN powder-coated - Mediterranean panels with dB-Stop - Mesh 100 or 145 mm	Unit	649.55 €
	PB07114ME-GMI	Intermediate post - 7 m above ground - Ø 114 x 3 mm ZN powder-coated - Mediterranean panels with dB-Stop - Mesh 100 or 145 mm	Unit	499.14 €
	PB07114ME-GMD	End post - 7 m above ground - Ø 114 x 3 mm ZN powder-coated - Mediterranean panels with dB-Stop - Mesh 100 or 145 mm	Unit	560.79 €
	PB07114ME-GMA	Corner post - 7 m above ground - Ø 114 x 3 mm ZN powder-coated - Mediterranean panels with dB-Stop - Mesh 100 or 145 mm	Unit	649.55 €
	PB07102ME-GMR	Retention post - 7 m above ground - Ø 101.6 x 2.5 mm ZN powder-coated - Mediterranean panels with dB-Stop - Mesh 100 or 145 mm	Unit	583.21 €
	PB07102ME-GMI	Intermediate post - 7 m above ground - Ø 101.6 x 2.5 mm ZN powder-coated - Mediterranean panels with dB-Stop - Mesh 100 or 145 mm	Unit	400.71 €
	PB07102ME-GMD	End post - 7 m above ground - Ø 101.6 x 2.5 mm ZN powder-coated - Mediterranean panels with dB-Stop - Mesh 100 or 145 mm	Unit	500.29 €
	PB07102ME-GMA	Corner post - 7 m above ground - Ø 101.6 x 2.5 mm ZN powder-coated - Mediterranean panels with dB-Stop - Mesh 100 or 145 mm	Unit	583.21 €
	PB07090ME-GMR	Retention post - 7 m above ground - Ø 88.9 x 2 mm ZN powder-coated - Mediterranean panels with dB-Stop - Mesh 100 or 145 mm	Unit	480.24 €
Mesh 2 m	PB07090ME-GMI	Intermediate post - 7 m above ground - Ø 88.9 x 2 mm ZN powder-coated - Mediterranean panels with dB-Stop - Mesh 100 or 145 mm	Unit	329.83 €
	PB07090ME-GMD	End post - 7 m above ground - Ø 88.9 x 2 mm ZN powder-coated - Mediterranean panels with dB-Stop - Mesh 100 or 145 mm	Unit	391.48 €
	PB07090ME-GMA	Corner post - 7 m above ground - Ø 88.9 x 2 mm ZN powder-coated - Mediterranean panels with dB-Stop - Mesh 100 or 145 mm	Unit	480.24 €
	PB07114DB-PMR	Retention post - 7 m above ground - Ø 114 x 3 mm ZN powder-coated - 2 m height dB-Stop panels - Mesh 25 or 48 mm	Unit	636.21 €
	PB07114DB-PMI	Intermediate post - 7 m above ground - Ø 114 x 3 mm ZN powder-coated - 2 m height dB-Stop panels - Mesh 25 or 48 mm	Unit	485.81 €
	PB07114DB-PMD	End post - 7 m above ground - Ø 114 x 3 mm ZN powder-coated - 2 m height dB-Stop panels - Mesh 25 or 48 mm	Unit	547.43 €
	PB07114DB-PMA	Corner post - 7 m above ground - Ø 114 x 3 mm ZN powder-coated - 2 m height dB-Stop panels - Mesh 25 or 48 mm	Unit	636.21 €
	PB07114DB-GMR	Retention post - 7 m above ground - Ø 114 x 3 mm ZN powder-coated - 2 m height dB-Stop panels - Mesh 100 or 145 mm	Unit	636.21 €
	PB07114DB-GMI	Intermediate post - 7 m above ground - Ø 114 x 3 mm ZN powder-coated - 2 m height dB-Stop panels - Mesh 100 or 145 mm	Unit	485.81 €
	PB07114DB-GMD	End post - 7 m above ground - Ø 114 x 3 mm ZN powder-coated - 2 m height dB-Stop panels - Mesh 100 or 145 mm	Unit	547.43 €
Mesh 2 m	PB07114DB-GMA	Corner post - 7 m above ground - Ø 114 x 3 mm ZN powder-coated - 2 m height dB-Stop panels - Mesh 100 or 145 mm	Unit	636.21 €
	PB07102DB-GMR	Retention post - 7 m above ground - Ø 101.6 x 2.5 mm ZN powder-coated - 2 m height dB-Stop panels - Mesh 100 or 145 mm	Unit	569.88 €
	PB07102DB-GMI	Intermediate post - 7 m above ground - Ø 101.6 x 2.5 mm ZN powder-coated - 2 m height dB-Stop panels - Mesh 100 or 145 mm	Unit	387.36 €
	PB07102DB-GMD	End post - 7 m above ground - Ø 101.6 x 2.5 mm ZN powder-coated - 2 m height dB-Stop panels - Mesh 100 or 145 mm	Unit	486.96 €
	PB07102DB-GMA	Corner post - 7 m above ground - Ø 101.6 x 2.5 mm ZN powder-coated - 2 m height dB-Stop panels - Mesh 100 or 145 mm	Unit	569.88 €
	PB07090DB-GMR	Retention post - 7 m above ground - Ø 88.9 x 2 mm ZN powder-coated - 2 m height dB-Stop panels - Mesh 100 or 145 mm	Unit	466.91 €
	PB07090DB-GMI	Intermediate post - 7 m above ground - Ø 88.9 x 2 mm ZN powder-coated - 2 m height dB-Stop panels - Mesh 100 or 145 mm	Unit	316.52 €
	PB07090DB-GMD	End post - 7 m above ground - Ø 88.9 x 2 mm ZN powder-coated - 2 m height dB-Stop panels - Mesh 100 or 145 mm	Unit	378.15 €
	PB07090DB-GMA	Corner post - 7 m above ground - Ø 88.9 x 2 mm ZN powder-coated - 2 m height dB-Stop panels - Mesh 100 or 145 mm	Unit	466.91 €

References	Designation	Sold by	Price 2023 exc VAT
Ball-stop / Posts / Height 6 m			<i>Page 10 of the catalog</i>
PB06114V2-TMR	Retention post - 6 m above ground - Ø 114 x 3 mm ZN powder-coated - Empty on lower part - All mesh	Unit	512.90 €
PB06114V2-TMI	Intermediate post - 6 m above ground - Ø 114 x 3 mm ZN powder-coated - Empty on lower part - All mesh	Unit	362.47 €
PB06114V2-TMD	End post - 6 m above ground - Ø 114 x 3 mm ZN powder-coated - Empty on lower part - All mesh	Unit	424.11 €
PB06114V2-TMA	Corner post - 6 m above ground - Ø 114 x 3 mm ZN powder-coated - Empty on lower part - All mesh	Unit	512.90 €
PB06102V2-TMR	Retention post - 6 m above ground - Ø 101.6 x 2.5 mm ZN powder-coated - Empty on lower part - All mesh	Unit	421.07 €
PB06102V2-TMI	Intermediate post - 6 m above ground - Ø 101.6 x 2.5 mm ZN powder-coated - Empty on lower part - All mesh	Unit	297.80 €
PB06102V2-TMD	End post - 6 m above ground - Ø 101.6 x 2.5 mm ZN powder-coated - Empty on lower part - All mesh	Unit	347.13 €
PB06102V2-TMA	Corner post - 6 m above ground - Ø 101.6 x 2.5 mm ZN powder-coated - Empty on lower part - All mesh	Unit	421.07 €
PB06090V2-GMR	Retention post - 6 m above ground - Ø 88.9 x 2 mm ZN powder-coated - Empty on lower part - Mesh 100 or 145 mm	Unit	355.93 €
PB06090V2-GMI	Intermediate post - 6 m above ground - Ø 88.9 x 2 mm ZN powder-coated - Empty on lower part - Mesh 100 or 145 mm	Unit	208.35 €
PB06090V2-GMD	End post - 6 m above ground - Ø 88.9 x 2 mm ZN powder-coated - Empty on lower part - Mesh 100 or 145 mm	Unit	283.90 €
PB06090V2-GMA	Corner post - 6 m above ground - Ø 88.9 x 2 mm ZN powder-coated - Empty on lower part - Mesh 100 or 145 mm	Unit	355.93 €
PB06080V2-GMR	Retention post - 6 m above ground - Ø 80 x 2 mm ZN powder-coated - Empty on lower part - Mesh 100 or 145 mm	Unit	347.83 €
PB06080V2-GMI	Intermediate post - 6 m above ground - Ø 80 x 2 mm ZN powder-coated - Empty on lower part - Mesh 100 or 145 mm	Unit	197.34 €
PB06080V2-GMD	End post - 6 m above ground - Ø 80 x 2 mm ZN powder-coated - Empty on lower part - Mesh 100 or 145 mm	Unit	256.25 €
PB06080V2-GMA	Corner post - 6 m above ground - Ø 80 x 2 mm ZN powder-coated - Empty on lower part - Mesh 100 or 145 mm	Unit	347.83 €
PB06114TF-TMR	Retention post - 6 m above ground - Ø 114 x 3 mm ZN powder-coated - All net - All mesh	Unit	512.90 €
PB06114TF-TMI	Intermediate post - 6 m above ground - Ø 114 x 3 mm ZN powder-coated - All net - All mesh	Unit	362.47 €
PB06114TF-TMD	End post - 6 m above ground - Ø 114 x 3 mm ZN powder-coated - All net - All mesh	Unit	424.11 €
PB06114TF-TMA	Corner post - 6 m above ground - Ø 114 x 3 mm ZN powder-coated - All net - All mesh	Unit	512.90 €
PB06102TF-TMR	Retention post - 6 m above ground - Ø 101.6 x 2.5 mm ZN powder-coated - All net - All mesh	Unit	421.07 €
PB06102TF-TMI	Intermediate post - 6 m above ground - Ø 101.6 x 2.5 mm ZN powder-coated - All net - All mesh	Unit	297.80 €
PB06102TF-TMD	End post - 6 m above ground - Ø 101.6 x 2.5 mm ZN powder-coated - All net - All mesh	Unit	347.13 €
PB06102TF-TMA	Corner post - 6 m above ground - Ø 101.6 x 2.5 mm ZN powder-coated - All net - All mesh	Unit	421.07 €
PB06090TF-GMR	Retention post - 6 m above ground - Ø 88.9 x 2 mm ZN powder-coated - All net - Mesh 100 or 145 mm	Unit	355.93 €
PB06090TF-GMI	Intermediate post - 6 m above ground - Ø 88.9 x 2 mm ZN powder-coated - All net - Mesh 100 or 145 mm	Unit	208.35 €
PB06090TF-GMD	End post - 6 m above ground - Ø 88.9 x 2 mm ZN powder-coated - All net - Mesh 100 or 145 mm	Unit	283.90 €
PB06090TF-GMA	Corner post - 6 m above ground - Ø 88.9 x 2 mm ZN powder-coated - All net - Mesh 100 or 145 mm	Unit	355.93 €
PB06080TF-GMR	Retention post - 6 m above ground - Ø 80 x 2 mm ZN powder-coated - All net - Mesh 100 or 145 mm	Unit	347.83 €
PB06080TF-GMI	Intermediate post - 6 m above ground - Ø 80 x 2 mm ZN powder-coated - All net - Mesh 100 or 145 mm	Unit	197.34 €
PB06080TF-GMD	End post - 6 m above ground - Ø 80 x 2 mm ZN powder-coated - All net - Mesh 100 or 145 mm	Unit	259.07 €
PB06080TF-GMA	Corner post - 6 m above ground - Ø 80 x 2 mm ZN powder-coated - All net - Mesh 100 or 145 mm	Unit	347.83 €
PB06114ST-TMR	Retention post - 6 m above ground - Ø 114 x 3 mm ZN powder-coated - 2 m height wire mesh on lower part - All mesh	Unit	546.00 €
PB06114ST-TMI	Intermediate post - 6 m above ground - Ø 114 x 3 mm ZN powder-coated - 2 m height wire mesh on lower part - All mesh	Unit	375.00 €
PB06114ST-TMD	End post - 6 m above ground - Ø 114 x 3 mm ZN powder-coated - 2 m height wire mesh on lower part - All mesh	Unit	440.68 €
PB06114ST-TMA	Corner post - 6 m above ground - Ø 114 x 3 mm ZN powder-coated - 2 m height wire mesh on lower part - All mesh	Unit	546.00 €
PB06102ST-TMR	Retention post - 6 m above ground - Ø 101.6 x 2.5 mm ZN powder-coated - 2 m height wire mesh on lower part - All mesh	Unit	454.20 €
PB06102ST-TMI	Intermediate post - 6 m above ground - Ø 101.6 x 2.5 mm ZN powder-coated - 2 m height wire mesh on lower part - All mesh	Unit	310.34 €
PB06102ST-TMD	End post - 6 m above ground - Ø 101.6 x 2.5 mm ZN powder-coated - 2 m height wire mesh on lower part - All mesh	Unit	363.68 €
PB06102ST-TMA	Corner post - 6 m above ground - Ø 101.6 x 2.5 mm ZN powder-coated - 2 m height wire mesh on lower part - All mesh	Unit	454.20 €
PB06090ST-GMR	Retention post - 6 m above ground - Ø 88.9 x 2 mm ZN powder-coated - 2 m height wire mesh on lower part - Mesh 100 or 145 mm	Unit	389.03 €
PB06090ST-GMI	Intermediate post - 6 m above ground - Ø 88.9 x 2 mm ZN powder-coated - 2 m height wire mesh on lower part - Mesh 100 or 145 mm	Unit	220.90 €
PB06090ST-GMD	End post - 6 m above ground - Ø 88.9 x 2 mm ZN powder-coated - 2 m height wire mesh on lower part - Mesh 100 or 145 mm	Unit	300.45 €
PB06090ST-GMA	Corner post - 6 m above ground - Ø 88.9 x 2 mm ZN powder-coated - 2 m height wire mesh on lower part - Mesh 100 or 145 mm	Unit	389.03 €
PB06080ST-GMR	Retention post - 6 m above ground - Ø 80 x 2 mm ZN powder-coated - 2 m height wire mesh on lower part - Mesh 100 or 145 mm	Unit	380.97 €
PB06080ST-GMI	Intermediate post - 6 m above ground - Ø 80 x 2 mm ZN powder-coated - 2 m height wire mesh on lower part - Mesh 100 or 145 mm	Unit	209.88 €
PB06080ST-GMD	End post - 6 m above ground - Ø 80 x 2 mm ZN powder-coated - 2 m height wire mesh on lower part - Mesh 100 or 145 mm	Unit	275.63 €
PB06080ST-GMA	Corner post - 6 m above ground - Ø 80 x 2 mm ZN powder-coated - 2 m height wire mesh on lower part - Mesh 100 or 145 mm	Unit	380.97 €
PB06114ME-TMR	Retention post - 6 m above ground - Ø 114 x 3 mm ZN powder-coated - Mediterranean panels with dB-Stop - All mesh	Unit	592.72 €
PB06114ME-TMI	Intermediate post - 6 m above ground - Ø 114 x 3 mm ZN powder-coated - Mediterranean panels with dB-Stop - All mesh	Unit	442.33 €
PB06114ME-TMD	End post - 6 m above ground - Ø 114 x 3 mm ZN powder-coated - Mediterranean panels with dB-Stop - All mesh	Unit	503.95 €
PB06114ME-TMA	Corner post - 6 m above ground - Ø 114 x 3 mm ZN powder-coated - Mediterranean panels with dB-Stop - All mesh	Unit	592.72 €
PB06102ME-TMR	Retention post - 6 m above ground - Ø 101.6 x 2.5 mm ZN powder-coated - Mediterranean panels with dB-Stop - All mesh	Unit	500.93 €
PB06102ME-TMI	Intermediate post - 6 m above ground - Ø 101.6 x 2.5 mm ZN powder-coated - Mediterranean panels with dB-Stop - All mesh	Unit	377.64 €
PB06102ME-TMD	End post - 6 m above ground - Ø 101.6 x 2.5 mm ZN powder-coated - Mediterranean panels with dB-Stop - All mesh	Unit	426.96 €
PB06102ME-TMA	Corner post - 6 m above ground - Ø 101.6 x 2.5 mm ZN powder-coated - Mediterranean panels with dB-Stop - All mesh	Unit	500.93 €

Empty 2 m

All net

Wire mesh 2 m

Mediterranean panels 2.3 m

References	Designation	Sold by	Price 2023 exc VAT	
Mediterranean panels 2.3 m	PB06090ME-GMR Retention post - 6 m above ground - Ø 88.9 x 2 mm ZN powder-coated - Mediterranean panels with dB-Stop - Mesh 100 or 145 mm	Unit	435.79 €	
	PB06090ME-GMI Intermediate post - 6 m above ground - Ø 88.9 x 2 mm ZN powder-coated - Mediterranean panels with dB-Stop - Mesh 100 or 145 mm	Unit	288.21 €	
	PB06090ME-GMD End post - 6 m above ground - Ø 88.9 x 2 mm ZN powder-coated - Mediterranean panels with dB-Stop - Mesh 100 or 145 mm	Unit	363.72 €	
	PB06090ME-GMA Corner post - 6 m above ground - Ø 88.9 x 2 mm ZN powder-coated - Mediterranean panels with dB-Stop - Mesh 100 or 145 mm	Unit	435.79 €	
	PB06080ME-GMR Retention post - 6 m above ground - Ø 80 x 2 mm ZN powder-coated - Mediterranean panels with dB-Stop - Mesh 100 or 145 mm	Unit	427.70 €	
	PB06080ME-GMI Intermediate post - 6 m above ground - Ø 80 x 2 mm ZN powder-coated - Mediterranean panels with dB-Stop - Mesh 100 or 145 mm	Unit	277.21 €	
	PB06080ME-GMD End post - 6 m above ground - Ø 80 x 2 mm ZN powder-coated - Mediterranean panels with dB-Stop - Mesh 100 or 145 mm	Unit	338.94 €	
	PB06080ME-GMA Corner post - 6 m above ground - Ø 80 x 2 mm ZN powder-coated - Mediterranean panels with dB-Stop - Mesh 100 or 145 mm	Unit	427.70 €	
	PB06114DB-TMR Retention post - 6 m above ground - Ø 114 x 3 mm ZN powder-coated - 2 m height dB-Stop panels - All mesh	Unit	579.41 €	
Mesh 2 m	PB06114DB-TMI Intermediate post - 6 m above ground - Ø 114 x 3 mm ZN powder-coated - 2 m height dB-Stop panels - All mesh	Unit	428.99 €	
	PB06114DB-TMD End post - 6 m above ground - Ø 114 x 3 mm ZN powder-coated - 2 m height dB-Stop panels - All mesh	Unit	490.64 €	
	PB06114DB-TMA Corner post - 6 m above ground - Ø 114 x 3 mm ZN powder-coated - 2 m height dB-Stop panels - All mesh	Unit	579.41 €	
	PB06102DB-TMR Retention post - 6 m above ground - Ø 101.6 x 2.5 mm ZN powder-coated - 2 m height dB-Stop panels - All mesh	Unit	487.61 €	
	PB06102DB-TMI Intermediate post - 6 m above ground - Ø 101.6 x 2.5 mm ZN powder-coated - 2 m height dB-Stop panels - All mesh	Unit	364.32 €	
	PB06102DB-TMD End post - 6 m above ground - Ø 101.6 x 2.5 mm ZN powder-coated - 2 m height dB-Stop panels - All mesh	Unit	413.65 €	
	PB06102DB-TMA Corner post - 6 m above ground - Ø 101.6 x 2.5 mm ZN powder-coated - 2 m height dB-Stop panels - All mesh	Unit	487.61 €	
	PB06090DB-GMR Retention post - 6 m above ground - Ø 88.9 x 2 mm ZN powder-coated - 2 m height dB-Stop panels - Mesh 100 or 145 mm	Unit	422.45 €	
	PB06090DB-GMI Intermediate post - 6 m above ground - Ø 88.9 x 2 mm ZN powder-coated - 2 m height dB-Stop panels - Mesh 100 or 145 mm	Unit	274.87 €	
	PB06090DB-GMD End post - 6 m above ground - Ø 88.9 x 2 mm ZN powder-coated - 2 m height dB-Stop panels - Mesh 100 or 145 mm	Unit	350.40 €	
	PB06090DB-GMA Corner post - 6 m above ground - Ø 88.9 x 2 mm ZN powder-coated - 2 m height dB-Stop panels - Mesh 100 or 145 mm	Unit	422.45 €	
	PB06080DB-GMR Retention post - 6 m above ground - Ø 80 x 2 mm ZN powder-coated - 2 m height dB-Stop panels - Mesh 100 or 145 mm	Unit	414.36 €	
	PB06080DB-GMI Intermediate post - 6 m above ground - Ø 80 x 2 mm ZN powder-coated - 2 m height dB-Stop panels - Mesh 100 or 145 mm	Unit	263.85 €	
	PB06080DB-GMD End post - 6 m above ground - Ø 80 x 2 mm ZN powder-coated - 2 m height dB-Stop panels - Mesh 100 or 145 mm	Unit	325.60 €	
	PB06080DB-GMA Corner post - 6 m above ground - Ø 80 x 2 mm ZN powder-coated - 2 m height dB-Stop panels - Mesh 100 or 145 mm	Unit	414.36 €	
	Clôtures / Netfix posts / Height 6 m			Page 41 du catalogue
	New	PB111900 Netfix ball-stop - 6 m above ground - Ø 90 mm ZN powder-coated - All mesh U clamp system - Net infill PE 145 mm mesh, wire Ø 2.3 mm	Set	Consult us
		PB111920 Netfix ball-stop - 6 m above ground - Ø 90 mm ZN powder-coated - Empty on lower part U clamp system - Net infill PE 145 mm mesh, wire Ø 2.3 mm	Set	Consult us
		PB111950 Netfix ball-stop - 6 m above ground - Ø 90 mm ZN powder-coated - 2 m height wire mesh on lower part U clamp system - Net infill PE 145 mm mesh, wire Ø 2.3 mm	Set	Consult us
Ball-stop / Posts / Height 5 m			Page 10 of the catalog	
Empty 2 m	PB05114V2-TMR Retention post - 5 m above ground - Ø 114 x 3 mm ZN powder-coated - Empty on lower part - All mesh	Unit	520.60 €	
	PB05114V2-TMI Intermediate post - 5 m above ground - Ø 114 x 3 mm ZN powder-coated - Empty on lower part - All mesh	Unit	370.20 €	
	PB05114V2-TMD End post - 5 m above ground - Ø 114 x 3 mm ZN powder-coated - Empty on lower part - All mesh	Unit	431.85 €	
	PB05114V2-TMA Corner post - 5 m above ground - Ø 114 x 3 mm ZN powder-coated - Empty on lower part - All mesh	Unit	520.60 €	
	PB05102V2-TMR Retention post - 5 m above ground - Ø 101.6 x 2.5 mm ZN powder-coated - Empty on lower part - All mesh	Unit	402.77 €	
	PB05102V2-TMI Intermediate post - 5 m above ground - Ø 101.6 x 2.5 mm ZN powder-coated - Empty on lower part - All mesh	Unit	252.35 €	
	PB05102V2-TMD End post - 5 m above ground - Ø 101.6 x 2.5 mm ZN powder-coated - Empty on lower part - All mesh	Unit	314.01 €	
	PB05102V2-TMA Corner post - 5 m above ground - Ø 101.6 x 2.5 mm ZN powder-coated - Empty on lower part - All mesh	Unit	402.77 €	
	PB05090V2-GMR Retention post - 5 m above ground - Ø 88.9 x 2 mm ZN powder-coated - Empty on lower part - Mesh 100 or 145 mm	Unit	340.68 €	
	PB05090V2-GMI Intermediate post - 5 m above ground - Ø 88.9 x 2 mm ZN powder-coated - Empty on lower part - Mesh 100 or 145 mm	Unit	170.39 €	
	PB05090V2-GMD End post - 5 m above ground - Ø 88.9 x 2 mm ZN powder-coated - Empty on lower part - Mesh 100 or 145 mm	Unit	250.81 €	
	PB05090V2-GMA Corner post - 5 m above ground - Ø 88.9 x 2 mm ZN powder-coated - Empty on lower part - Mesh 100 or 145 mm	Unit	340.68 €	
	PB05080V2-GMR Retention post - 5 m above ground - Ø 80 x 2 mm ZN powder-coated - Empty on lower part - Mesh 100 or 145 mm	Unit	337.11 €	
	PB05080V2-GMI Intermediate post - 5 m above ground - Ø 80 x 2 mm ZN powder-coated - Empty on lower part - Mesh 100 or 145 mm	Unit	167.93 €	
	PB05080V2-GMD End post - 5 m above ground - Ø 80 x 2 mm ZN powder-coated - Empty on lower part - Mesh 100 or 145 mm	Unit	248.33 €	
	PB05080V2-GMA Corner post - 5 m above ground - Ø 80 x 2 mm ZN powder-coated - Empty on lower part - Mesh 100 or 145 mm	Unit	337.11 €	
	All net	PB05114TF-TMR Retention post - 5 m above ground - Ø 114 x 3 mm ZN powder-coated - All net - All mesh	Unit	520.60 €
		PB05114TF-TMI Intermediate post - 5 m above ground - Ø 114 x 3 mm ZN powder-coated - All net - All mesh	Unit	370.20 €
		PB05114TF-TMD End post - 5 m above ground - Ø 114 x 3 mm ZN powder-coated - All net - All mesh	Unit	431.85 €
PB05114TF-TMA Corner post - 5 m above ground - Ø 114 x 3 mm ZN powder-coated - All net - All mesh		Unit	520.60 €	
PB05102TF-TMR Retention post - 5 m above ground - Ø 101.6 x 2.5 mm ZN powder-coated - All net - All mesh		Unit	402.77 €	
PB05102TF-TMI Intermediate post - 5 m above ground - Ø 101.6 x 2.5 mm ZN powder-coated - All net - All mesh		Unit	252.35 €	
PB05102TF-TMD End post - 5 m above ground - Ø 101.6 x 2.5 mm ZN powder-coated - All net - All mesh		Unit	314.01 €	
PB05102TF-TMA Corner post - 5 m above ground - Ø 101.6 x 2.5 mm ZN powder-coated - All net - All mesh		Unit	402.77 €	
PB05090TF-GMR Retention post - 5 m above ground - Ø 88.9 x 2 mm ZN powder-coated - All net - Mesh 100 or 145 mm		Unit	340.68 €	
PB05090TF-GMI Intermediate post - 5 m above ground - Ø 88.9 x 2 mm ZN powder-coated - All net - Mesh 100 or 145 mm		Unit	170.39 €	

	References	Designation	Sold by	Price 2023 exc VAT
All net	PB05090TF-GMD	End post - 5 m above ground - Ø 88.9 x 2 mm ZN powder-coated - All net - Mesh 100 or 145 mm	Unit	250.81 €
	PB05090TF-GMA	Corner post - 5 m above ground - Ø 88.9 x 2 mm ZN powder-coated - All net - Mesh 100 or 145 mm	Unit	340.68 €
	PB05080TF-GMR	Retention post - 5 m above ground - Ø 80 x 2 mm ZN powder-coated - All net - Mesh 100 or 145 mm	Unit	337.11 €
	PB05080TF-GMI	Intermediate post - 5 m above ground - Ø 80 x 2 mm ZN powder-coated - All net - Mesh 100 or 145 mm	Unit	167.93 €
Wire mesh 2 m	PB05080TF-GMD	End post - 5 m above ground - Ø 80 x 2 mm ZN powder-coated - All net - Mesh 100 or 145 mm	Unit	248.33 €
	PB05080TF-GMA	Corner post - 5 m above ground - Ø 80 x 2 mm ZN powder-coated - All net - Mesh 100 or 145 mm	Unit	337.11 €
	PB05114ST-TMR	Retention post - 5 m above ground - Ø 114 x 3 mm ZN powder-coated - 2 m height wire mesh on lower part - All mesh	Unit	553.72 €
	PB05114ST-TMI	Intermediate post - 5 m above ground - Ø 114 x 3 mm ZN powder-coated - 2 m height wire mesh on lower part - All mesh	Unit	382.75 €
	PB05114ST-TMD	End post - 5 m above ground - Ø 114 x 3 mm ZN powder-coated - 2 m height wire mesh on lower part - All mesh	Unit	448.41 €
	PB05114ST-TMA	Corner post - 5 m above ground - Ø 114 x 3 mm ZN powder-coated - 2 m height wire mesh on lower part - All mesh	Unit	553.72 €
	PB05102ST-TMR	Retention post - 5 m above ground - Ø 101.6 x 2.5 mm ZN powder-coated - 2 m height wire mesh on lower part - All mesh	Unit	435.90 €
	PB05102ST-TMI	Intermediate post - 5 m above ground - Ø 101.6 x 2.5 mm ZN powder-coated - 2 m height wire mesh on lower part - All mesh	Unit	264.91 €
	PB05102ST-TMD	End post - 5 m above ground - Ø 101.6 x 2.5 mm ZN powder-coated - 2 m height wire mesh on lower part - All mesh	Unit	330.58 €
	PB05102ST-TMA	Corner post - 5 m above ground - Ø 101.6 x 2.5 mm ZN powder-coated - 2 m height wire mesh on lower part - All mesh	Unit	435.90 €
	PB05090ST-GMR	Retention post - 5 m above ground - Ø 88.9 x 2 mm ZN powder-coated - 2 m height wire mesh on lower part - Mesh 100 or 145 mm	Unit	373.80 €
	Mediterranean panels 2,3 m	PB05090ST-GMI	Intermediate post - 5 m above ground - Ø 88.9 x 2 mm ZN powder-coated - 2 m height wire mesh on lower part - Mesh 100 or 145 mm	Unit
PB05090ST-GMD		End post - 5 m above ground - Ø 88.9 x 2 mm ZN powder-coated - 2 m height wire mesh on lower part - Mesh 100 or 145 mm	Unit	267.37 €
PB05090ST-GMA		Corner post - 5 m above ground - Ø 88.9 x 2 mm ZN powder-coated - 2 m height wire mesh on lower part - Mesh 100 or 145 mm	Unit	373.80 €
PB05080ST-GMR		Retention post - 5 m above ground - Ø 80 x 2 mm ZN powder-coated - 2 m height wire mesh on lower part - Mesh 100 or 145 mm	Unit	370.23 €
PB05080ST-GMI		Intermediate post - 5 m above ground - Ø 80 x 2 mm ZN powder-coated - 2 m height wire mesh on lower part - Mesh 100 or 145 mm	Unit	180.47 €
PB05080ST-GMD		End post - 5 m above ground - Ø 80 x 2 mm ZN powder-coated - 2 m height wire mesh on lower part - Mesh 100 or 145 mm	Unit	264.91 €
PB05080ST-GMA		Corner post - 5 m above ground - Ø 80 x 2 mm ZN powder-coated - 2 m height wire mesh on lower part - Mesh 100 or 145 mm	Unit	370.23 €
PB05114ME-TMR		Retention post - 5 m above ground - Ø 114 x 3 mm ZN powder-coated - Mediterranean panels with dB-Stop - All mesh	Unit	600.47 €
PB05114ME-TMI		Intermediate post - 5 m above ground - Ø 114 x 3 mm ZN powder-coated - Mediterranean panels with dB-Stop - All mesh	Unit	450.05 €
PB05114ME-TMD		End post - 5 m above ground - Ø 114 x 3 mm ZN powder-coated - Mediterranean panels with dB-Stop - All mesh	Unit	511.72 €
PB05114ME-TMA		Corner post - 5 m above ground - Ø 114 x 3 mm ZN powder-coated - Mediterranean panels with dB-Stop - All mesh	Unit	600.47 €
Mesh 2 m		PB05102ME-TMR	Retention post - 5 m above ground - Ø 101.6 x 2.5 mm ZN powder-coated - Mediterranean panels with dB-Stop - All mesh	Unit
	PB05102ME-TMI	Intermediate post - 5 m above ground - Ø 101.6 x 2.5 mm ZN powder-coated - Mediterranean panels with dB-Stop - All mesh	Unit	332.22 €
	PB05102ME-TMD	End post - 5 m above ground - Ø 101.6 x 2.5 mm ZN powder-coated - Mediterranean panels with dB-Stop - All mesh	Unit	393.88 €
	PB05102ME-TMA	Corner post - 5 m above ground - Ø 101.6 x 2.5 mm ZN powder-coated - Mediterranean panels with dB-Stop - All mesh	Unit	482.63 €
	PB05090ME-GMR	Retention post - 5 m above ground - Ø 88.9 x 2 mm ZN powder-coated - Mediterranean panels with dB-Stop - Mesh 100 or 145 mm	Unit	420.52 €
	PB05090ME-GMI	Intermediate post - 5 m above ground - Ø 88.9 x 2 mm ZN powder-coated - Mediterranean panels with dB-Stop - Mesh 100 or 145 mm	Unit	250.26 €
	PB05090ME-GMD	End post - 5 m above ground - Ø 88.9 x 2 mm ZN powder-coated - Mediterranean panels with dB-Stop - Mesh 100 or 145 mm	Unit	330.68 €
	PB05090ME-GMA	Corner post - 5 m above ground - Ø 88.9 x 2 mm ZN powder-coated - Mediterranean panels with dB-Stop - Mesh 100 or 145 mm	Unit	420.52 €
	PB05080ME-GMR	Retention post - 5 m above ground - Ø 80 x 2 mm ZN powder-coated - Mediterranean panels with dB-Stop - Mesh 100 or 145 mm	Unit	416.94 €
	PB05080ME-GMI	Intermediate post - 5 m above ground - Ø 80 x 2 mm ZN powder-coated - Mediterranean panels with dB-Stop - Mesh 100 or 145 mm	Unit	247.78 €
	PB05080ME-GMD	End post - 5 m above ground - Ø 80 x 2 mm ZN powder-coated - Mediterranean panels with dB-Stop - Mesh 100 or 145 mm	Unit	328.19 €
	PB05080ME-GMA	Corner post - 5 m above ground - Ø 80 x 2 mm ZN powder-coated - Mediterranean panels with dB-Stop - Mesh 100 or 145 mm	Unit	416.94 €
Ball-stop / Posts / Height 4 m	PB05114DB-TMR	Retention post - 5 m above ground - Ø 114 x 3 mm ZN powder-coated - 2 m height dB-Stop panels - All mesh	Unit	587.12 €
	PB05114DB-TMI	Intermediate post - 5 m above ground - Ø 114 x 3 mm ZN powder-coated - 2 m height dB-Stop panels - All mesh	Unit	436.71 €
	PB05114DB-TMD	End post - 5 m above ground - Ø 114 x 3 mm ZN powder-coated - 2 m height dB-Stop panels - All mesh	Unit	498.37 €
	PB05114DB-TMA	Corner post - 5 m above ground - Ø 114 x 3 mm ZN powder-coated - 2 m height dB-Stop panels - All mesh	Unit	587.12 €
	PB05102DB-TMR	Retention post - 5 m above ground - Ø 101.6 x 2.5 mm ZN powder-coated - 2 m height dB-Stop panels - All mesh	Unit	469.30 €
	PB05102DB-TMI	Intermediate post - 5 m above ground - Ø 101.6 x 2.5 mm ZN powder-coated - 2 m height dB-Stop panels - All mesh	Unit	318.87 €
	PB05102DB-TMD	End post - 5 m above ground - Ø 101.6 x 2.5 mm ZN powder-coated - 2 m height dB-Stop panels - All mesh	Unit	380.53 €
	PB05102DB-TMA	Corner post - 5 m above ground - Ø 101.6 x 2.5 mm ZN powder-coated - 2 m height dB-Stop panels - All mesh	Unit	469.30 €
	PB05090DB-GMR	Retention post - 5 m above ground - Ø 88.9 x 2 mm ZN powder-coated - 2 m height dB-Stop panels - Mesh 100 or 145 mm	Unit	391.28 €
	PB05090DB-GMI	Intermediate post - 5 m above ground - Ø 88.9 x 2 mm ZN powder-coated - 2 m height dB-Stop panels - Mesh 100 or 145 mm	Unit	236.91 €
	PB05090DB-GMD	End post - 5 m above ground - Ø 88.9 x 2 mm ZN powder-coated - 2 m height dB-Stop panels - Mesh 100 or 145 mm	Unit	317.34 €
	PB05090DB-GMA	Corner post - 5 m above ground - Ø 88.9 x 2 mm ZN powder-coated - 2 m height dB-Stop panels - Mesh 100 or 145 mm	Unit	391.28 €
PB05080DB-GMR	Retention post - 5 m above ground - Ø 80 x 2 mm ZN powder-coated - 2 m height dB-Stop panels - Mesh 100 or 145 mm	Unit	403.63 €	
PB05080DB-GMI	Intermediate post - 5 m above ground - Ø 80 x 2 mm ZN powder-coated - 2 m height dB-Stop panels - Mesh 100 or 145 mm	Unit	234.45 €	
PB05080DB-GMD	End post - 5 m above ground - Ø 80 x 2 mm ZN powder-coated - 2 m height dB-Stop panels - Mesh 100 or 145 mm	Unit	314.87 €	
PB05080DB-GMA	Corner post - 5 m above ground - Ø 80 x 2 mm ZN powder-coated - 2 m height dB-Stop panels - Mesh 100 or 145 mm	Unit	403.63 €	

	References	Designation	Sold by	Price 2023 exc VAT	
Empty 2 m	PB04114V2-PMD	End post - 4 m above ground - Ø 114 x 3 mm ZN powder-coated - Empty on lower part - Mesh 25 or 48 mm	Unit	405.01 €	
	PB04114V2-PMA	Corner post - 4 m above ground - Ø 114 x 3 mm ZN powder-coated - Empty on lower part - Mesh 25 or 48 mm	Unit	493.78 €	
	PB04102V2-TMR	Retention post - 4 m above ground - Ø 101.6 x 2.5 mm ZN powder-coated - Empty on lower part - All mesh	Unit	378.29 €	
	PB04102V2-TMI	Intermediate post - 4 m above ground - Ø 101.6 x 2.5 mm ZN powder-coated - Empty on lower part - All mesh	Unit	227.89 €	
	PB04102V2-TMD	End post - 4 m above ground - Ø 101.6 x 2.5 mm ZN powder-coated - Empty on lower part - All mesh	Unit	289.54 €	
	PB04102V2-TMA	Corner post - 4 m above ground - Ø 101.6 x 2.5 mm ZN powder-coated - Empty on lower part - All mesh	Unit	378.29 €	
	PB04090V2-TMR	Retention post - 4 m above ground - Ø 88.9 x 2 mm ZN powder-coated - Empty on lower part - All mesh	Unit	255.49 €	
	PB04090V2-TMI	Intermediate post - 4 m above ground - Ø 88.9 x 2 mm ZN powder-coated - Empty on lower part - All mesh	Unit	142.34 €	
	PB04090V2-TMD	End post - 4 m above ground - Ø 88.9 x 2 mm ZN powder-coated - Empty on lower part - All mesh	Unit	193.75 €	
	PB04090V2-TMA	Corner post - 4 m above ground - Ø 88.9 x 2 mm ZN powder-coated - Empty on lower part - All mesh	Unit	255.49 €	
	PB04080V2-TMR	Retention post - 4 m above ground - Ø 80 x 2 mm ZN powder-coated - Empty on lower part - All mesh	Unit	221.18 €	
	PB04080V2-TMI	Intermediate post - 4 m above ground - Ø 80 x 2 mm ZN powder-coated - Empty on lower part - All mesh	Unit	132.91 €	
	PB04080V2-TMD	End post - 4 m above ground - Ø 80 x 2 mm ZN powder-coated - Empty on lower part - All mesh	Unit	163.44 €	
	PB04080V2-TMA	Corner post - 4 m above ground - Ø 80 x 2 mm ZN powder-coated - Empty on lower part - All mesh	Unit	221.18 €	
	PB04060V2-GMR	Retention post - 4 m above ground - Ø 60 x 2 mm ZN powder-coated - Empty on lower part - Mesh 100 or 145 mm	Unit	228.64 €	
	PB04060V2-GMI	Intermediate post - 4 m above ground - Ø 60 x 2 mm ZN powder-coated - Empty on lower part - Mesh 100 or 145 mm	Unit	103.06 €	
	PB04060V2-GMD	End post - 4 m above ground - Ø 60 x 2 mm ZN powder-coated - Empty on lower part - Mesh 100 or 145 mm	Unit	164.16 €	
	PB04060V2-GMA	Corner post - 4 m above ground - Ø 60 x 2 mm ZN powder-coated - Empty on lower part - Mesh 100 or 145 mm	Unit	228.64 €	
	All net	PB04114TF-TMR	Retention post - 4 m above ground - Ø 114 x 3 mm ZN powder-coated - All net - All mesh	Unit	493.78 €
		PB04114TF-TMI	Intermediate post - 4 m above ground - Ø 114 x 3 mm ZN powder-coated - All net - All mesh	Unit	343.38 €
PB04114TF-TMD		End post - 4 m above ground - Ø 114 x 3 mm ZN powder-coated - All net - All mesh	Unit	405.01 €	
PB04114TF-TMA		Corner post - 4 m above ground - Ø 114 x 3 mm ZN powder-coated - All net - All mesh	Unit	493.78 €	
PB04102TF-TMR		Retention post - 4 m above ground - Ø 101.6 x 2.5 mm ZN powder-coated - All net - All mesh	Unit	378.29 €	
PB04102TF-TMI		Intermediate post - 4 m above ground - Ø 101.6 x 2.5 mm ZN powder-coated - All net - All mesh	Unit	227.89 €	
PB04102TF-TMD		End post - 4 m above ground - Ø 101.6 x 2.5 mm ZN powder-coated - All net - All mesh	Unit	289.54 €	
PB04102TF-TMA		Corner post - 4 m above ground - Ø 101.6 x 2.5 mm ZN powder-coated - All net - All mesh	Unit	378.29 €	
PB04090TF-TMR		Retention post - 4 m above ground - Ø 88.9 x 2 mm ZN powder-coated - All net - All mesh	Unit	255.49 €	
PB04090TF-TMI		Intermediate post - 4 m above ground - Ø 88.9 x 2 mm ZN powder-coated - All net - All mesh	Unit	142.34 €	
PB04090TF-TMD		End post - 4 m above ground - Ø 88.9 x 2 mm ZN powder-coated - All net - All mesh	Unit	193.75 €	
PB04090TF-TMA		Corner post - 4 m above ground - Ø 88.9 x 2 mm ZN powder-coated - All net - All mesh	Unit	255.49 €	
PB04080TF-TMR		Retention post - 4 m above ground - Ø 80 x 2 mm ZN powder-coated - All net - All mesh	Unit	221.18 €	
PB04080TF-TMI		Intermediate post - 4 m above ground - Ø 80 x 2 mm ZN powder-coated - All net - All mesh	Unit	132.91 €	
PB04080TF-TMD		End post - 4 m above ground - Ø 80 x 2 mm ZN powder-coated - All net - All mesh	Unit	163.44 €	
PB04080TF-TMA		Corner post - 4 m above ground - Ø 80 x 2 mm ZN powder-coated - All net - All mesh	Unit	221.18 €	
PB04060TF-GMR		Retention post - 4 m above ground - Ø 60 x 2 mm ZN powder-coated - All net - Mesh 100 or 145 mm	Unit	228.64 €	
PB04060TF-GMI		Intermediate post - 4 m above ground - Ø 60 x 2 mm ZN powder-coated - All net - Mesh 100 or 145 mm	Unit	103.06 €	
PB04060TF-GMD		End post - 4 m above ground - Ø 60 x 2 mm ZN powder-coated - All net - Mesh 100 or 145 mm	Unit	163.44 €	
PB04060TF-GMA		Corner post - 4 m above ground - Ø 60 x 2 mm ZN powder-coated - All net - Mesh 100 or 145 mm	Unit	228.64 €	
Wire mesh 2 m	PB04114ST-PMR	Retention post - 4 m above ground - Ø 114 x 3 mm ZN powder-coated - 2 m height wire mesh on lower part - Mesh 25 or 48 mm	Unit	376.50 €	
	PB04114ST-PMI	Intermediate post - 4 m above ground - Ø 114 x 3 mm ZN powder-coated - 2 m height wire mesh on lower part - Mesh 25 or 48 mm	Unit	355.93 €	
	PB04114ST-PMD	End post - 4 m above ground - Ø 114 x 3 mm ZN powder-coated - 2 m height wire mesh on lower part - Mesh 25 or 48 mm	Unit	421.58 €	
	PB04114ST-PMA	Corner post - 4 m above ground - Ø 114 x 3 mm ZN powder-coated - 2 m height wire mesh on lower part - Mesh 25 or 48 mm	Unit	526.91 €	
	PB04102ST-TMR	Retention post - 4 m above ground - Ø 101.6 x 2.5 mm ZN powder-coated - 2 m height wire mesh on lower part - All mesh	Unit	411.41 €	
	PB04102ST-TMI	Intermediate post - 4 m above ground - Ø 101.6 x 2.5 mm ZN powder-coated - 2 m height wire mesh on lower part - All mesh	Unit	240.44 €	
	PB04102ST-TMD	End post - 4 m above ground - Ø 101.6 x 2.5 mm ZN powder-coated - 2 m height wire mesh on lower part - All mesh	Unit	306.09 €	
	PB04102ST-TMA	Corner post - 4 m above ground - Ø 101.6 x 2.5 mm ZN powder-coated - 2 m height wire mesh on lower part - All mesh	Unit	411.41 €	
	PB04090ST-TMR	Retention post - 4 m above ground - Ø 88.9 x 2 mm ZN powder-coated - 2 m height wire mesh on lower part - All mesh	Unit	288.62 €	
	PB04090ST-TMI	Intermediate post - 4 m above ground - Ø 88.9 x 2 mm ZN powder-coated - 2 m height wire mesh on lower part - All mesh	Unit	154.88 €	
	PB04090ST-TMD	End post - 4 m above ground - Ø 88.9 x 2 mm ZN powder-coated - 2 m height wire mesh on lower part - All mesh	Unit	210.32 €	
	PB04090ST-TMA	Corner post - 4 m above ground - Ø 88.9 x 2 mm ZN powder-coated - 2 m height wire mesh on lower part - All mesh	Unit	288.62 €	
	PB04080ST-TMR	Retention post - 4 m above ground - Ø 80 x 2 mm ZN powder-coated - 2 m height wire mesh on lower part - All mesh	Unit	254.31 €	
	PB04080ST-TMI	Intermediate post - 4 m above ground - Ø 80 x 2 mm ZN powder-coated - 2 m height wire mesh on lower part - All mesh	Unit	145.45 €	
	PB04080ST-TMD	End post - 4 m above ground - Ø 80 x 2 mm ZN powder-coated - 2 m height wire mesh on lower part - All mesh	Unit	180.00 €	
	PB04080ST-TMA	Corner post - 4 m above ground - Ø 80 x 2 mm ZN powder-coated - 2 m height wire mesh on lower part - All mesh	Unit	254.31 €	
	PB04060ST-GMR	Retention post - 4 m above ground - Ø 60 x 2 mm ZN powder-coated - 2 m height wire mesh on lower part - Mesh 100 or 145 mm	Unit	261.76 €	
	PB04060ST-GMI	Intermediate post - 4 m above ground - Ø 60 x 2 mm ZN powder-coated - 2 m height wire mesh on lower part - Mesh 100 or 145 mm	Unit	115.61 €	
	PB04060ST-GMD	End post - 4 m above ground - Ø 60 x 2 mm ZN powder-coated - 2 m height wire mesh on lower part - Mesh 100 or 145 mm	Unit	180.72 €	
	PB04060ST-GMA	Corner post - 4 m above ground - Ø 60 x 2 mm ZN powder-coated - 2 m height wire mesh on lower part - Mesh 100 or 145 mm	Unit	261.76 €	

Mediterranean panels 2.3 m

Mesh 2 m

References	Designation	Sold by	Price 2023 exc VAT
PB04114ME-PMR	Retention post - 4 m above ground - Ø 114 x 3 mm ZN powder-coated - Mediterranean panels with dB-Stop - Mesh 25 or 48 mm	Unit	573.63 €
PB04114ME-PMI	Intermediate post - 4 m above ground - Ø 114 x 3 mm ZN powder-coated - Mediterranean panels with dB-Stop - Mesh 25 or 48 mm	Unit	423.25 €
PB04114ME-PMD	End post - 4 m above ground - Ø 114 x 3 mm ZN powder-coated - Mediterranean panels with dB-Stop - Mesh 25 or 48 mm	Unit	484.86 €
PB04114ME-PMA	Corner post - 4 m above ground - Ø 114 x 3 mm ZN powder-coated - Mediterranean panels with dB-Stop - Mesh 25 or 48 mm	Unit	573.63 €
PB04102ME-TMR	Retention post - 4 m above ground - Ø 101.6 x 2.5 mm ZN powder-coated - Mediterranean panels with dB-Stop - All mesh	Unit	458.15 €
PB04102ME-TMI	Intermediate post - 4 m above ground - Ø 101.6 x 2.5 mm ZN powder-coated - Mediterranean panels with dB-Stop - All mesh	Unit	307.74 €
PB04102ME-TMD	End post - 4 m above ground - Ø 101.6 x 2.5 mm ZN powder-coated - Mediterranean panels with dB-Stop - All mesh	Unit	369.40 €
PB04102ME-TMA	Corner post - 4 m above ground - Ø 101.6 x 2.5 mm ZN powder-coated - Mediterranean panels with dB-Stop - All mesh	Unit	458.15 €
PB04090ME-TMR	Retention post - 4 m above ground - Ø 88.9 x 2 mm ZN powder-coated - Mediterranean panels with dB-Stop - All mesh	Unit	335.34 €
PB04090ME-TMI	Intermediate post - 4 m above ground - Ø 88.9 x 2 mm ZN powder-coated - Mediterranean panels with dB-Stop - All mesh	Unit	222.21 €
PB04090ME-TMD	End post - 4 m above ground - Ø 88.9 x 2 mm ZN powder-coated - Mediterranean panels with dB-Stop - All mesh	Unit	273.60 €
PB04090ME-TMA	Corner post - 4 m above ground - Ø 88.9 x 2 mm ZN powder-coated - Mediterranean panels with dB-Stop - All mesh	Unit	335.34 €
PB04080ME-TMR	Retention post - 4 m above ground - Ø 80 x 2 mm ZN powder-coated - Mediterranean panels with dB-Stop - All mesh	Unit	301.04 €
PB04080ME-TMI	Intermediate post - 4 m above ground - Ø 80 x 2 mm ZN powder-coated - Mediterranean panels with dB-Stop - All mesh	Unit	212.77 €
PB04080ME-TMD	End post - 4 m above ground - Ø 80 x 2 mm ZN powder-coated - Mediterranean panels with dB-Stop - All mesh	Unit	243.31 €
PB04080ME-TMA	Corner post - 4 m above ground - Ø 80 x 2 mm ZN powder-coated - Mediterranean panels with dB-Stop - All mesh	Unit	301.04 €
PB04060ME-GMR	Retention post - 4 m above ground - Ø 60 x 2 mm ZN powder-coated - Mediterranean panels with dB-Stop - Mesh 100 or 145 mm	Unit	308.48 €
PB04060ME-GMI	Intermediate post - 4 m above ground - Ø 60 x 2 mm ZN powder-coated - Mediterranean panels with dB-Stop - Mesh 100 or 145 mm	Unit	182.91 €
PB04060ME-GMD	End post - 4 m above ground - Ø 60 x 2 mm ZN powder-coated - Mediterranean panels with dB-Stop - Mesh 100 or 145 mm	Unit	244.01 €
PB04060ME-GMA	Corner post - 4 m above ground - Ø 60 x 2 mm ZN powder-coated - Mediterranean panels with dB-Stop - Mesh 100 or 145 mm	Unit	308.48 €
PB04114DB-PMR	Retention post - 4 m above ground - Ø 114 x 3 mm ZN powder-coated - 2 m height dB-Stop panels - Mesh 25 or 48 mm	Unit	560.30 €
PB04114DB-PMI	Intermediate post - 4 m above ground - Ø 114 x 3 mm ZN powder-coated - 2 m height dB-Stop panels - Mesh 25 or 48 mm	Unit	409.90 €
PB04114DB-PMD	End post - 4 m above ground - Ø 114 x 3 mm ZN powder-coated - 2 m height dB-Stop panels - Mesh 25 or 48 mm	Unit	471.52 €
PB04114DB-PMA	Corner post - 4 m above ground - Ø 114 x 3 mm ZN powder-coated - 2 m height dB-Stop panels - Mesh 25 or 48 mm	Unit	560.30 €
PB04102DB-TMR	Retention post - 4 m above ground - Ø 101.6 x 2.5 mm ZN powder-coated - 2 m height dB-Stop panels - All mesh	Unit	444.83 €
PB04102DB-TMI	Intermediate post - 4 m above ground - Ø 101.6 x 2.5 mm ZN powder-coated - 2 m height dB-Stop panels - All mesh	Unit	294.41 €
PB04102DB-TMD	End post - 4 m above ground - Ø 101.6 x 2.5 mm ZN powder-coated - 2 m height dB-Stop panels - All mesh	Unit	356.07 €
PB04102DB-TMA	Corner post - 4 m above ground - Ø 101.6 x 2.5 mm ZN powder-coated - 2 m height dB-Stop panels - All mesh	Unit	444.83 €
PB04090DB-TMR	Retention post - 4 m above ground - Ø 88.9 x 2 mm ZN powder-coated - 2 m height dB-Stop panels - All mesh	Unit	322.01 €
PB04090DB-TMI	Intermediate post - 4 m above ground - Ø 88.9 x 2 mm ZN powder-coated - 2 m height dB-Stop panels - All mesh	Unit	208.86 €
PB04090DB-TMD	End post - 4 m above ground - Ø 88.9 x 2 mm ZN powder-coated - 2 m height dB-Stop panels - All mesh	Unit	260.28 €
PB04090DB-TMA	Corner post - 4 m above ground - Ø 88.9 x 2 mm ZN powder-coated - 2 m height dB-Stop panels - All mesh	Unit	322.01 €
PB04080DB-TMR	Retention post - 4 m above ground - Ø 80 x 2 mm ZN powder-coated - 2 m height dB-Stop panels - All mesh	Unit	287.71 €
PB04080DB-TMI	Intermediate post - 4 m above ground - Ø 80 x 2 mm ZN powder-coated - 2 m height dB-Stop panels - All mesh	Unit	199.44 €
PB04080DB-TMD	End post - 4 m above ground - Ø 80 x 2 mm ZN powder-coated - 2 m height dB-Stop panels - All mesh	Unit	229.96 €
PB04080DB-TMA	Corner post - 4 m above ground - Ø 80 x 2 mm ZN powder-coated - 2 m height dB-Stop panels - All mesh	Unit	287.71 €
PB04060DB-GMR	Retention post - 4 m above ground - Ø 60 x 2 mm ZN powder-coated - 2 m height dB-Stop panels - Mesh 100 or 145 mm	Unit	295.17 €
PB04060DB-GMI	Intermediate post - 4 m above ground - Ø 60 x 2 mm ZN powder-coated - 2 m height dB-Stop panels - Mesh 100 or 145 mm	Unit	169.58 €
PB04060DB-GMD	End post - 4 m above ground - Ø 60 x 2 mm ZN powder-coated - 2 m height dB-Stop panels - Mesh 100 or 145 mm	Unit	230.68 €
PB04060DB-GMA	Corner post - 4 m above ground - Ø 60 x 2 mm ZN powder-coated - 2 m height dB-Stop panels - Mesh 100 or 145 mm	Unit	295.17 €

Ball-stop / Posts / Height 3 m			Page 10 of the catalog
PB111115	Steel powder-coated End post Ø 114 mm - 3 m above ground	Unit	378.19 €
PB111215	Steel powder-coated Corner post Ø 114 mm - 3 m above ground	Unit	466.95 €
PB111212-R	Steel powder-coated Retention post Ø 114 mm - 3 m above ground	Unit	466.92 €
PB111615	Steel powder-coated Intermediate post Ø 114 mm - 3 m above ground	Unit	316.54 €
PB111063	Steel powder-coated End post Ø 102 mm - 3 m above ground	Unit	289.54 €
PB111163	Steel powder-coated Corner post Ø 102 mm - 3 m above ground	Unit	378.29 €
PB111166-R	Steel powder-coated Retention post Ø 102 mm - 3 m above ground	Unit	378.29 €
PB111566	Steel powder-coated Intermediate post Ø 102 mm - 3 m above ground	Unit	227.89 €
PB111053	Steel powder-coated End post Ø 90 mm - 3 m above ground	Unit	255.52 €
PB111153	Steel powder-coated Corner post Ø 90 mm - 3 m above ground	Unit	344.28 €
PB111153-R	Steel powder-coated Retention post Ø 90 mm - 3 m above ground	Unit	344.28 €
PB111601	Steel powder-coated Intermediate post Ø 90 mm - 3 m above ground	Unit	193.89 €
PB111030	Steel powder-coated End post Ø 90 mm - 3 m above ground	Unit	126.37 €
PB111130	Steel powder-coated Corner post Ø 50 mm - 3 m above ground	Unit	191.66 €
PB111130-R	Steel powder-coated Retention post Ø 50 mm - 3 m above ground	Unit	191.66 €
PB111530	Steel powder-coated Intermediate post Ø 50 mm - 3 m above ground	Unit	68.18 €

References	Designation	Sold by	Price 2023 exc VAT
Ball-stop / Posts / Height 2.3 m			<i>Page 12 of the catalog</i>
PB23080ME-NAI	Intermediate post - 2.3 m above ground - Ø 80 x 2 mm ZN powder-coated - Mediterranean panels with dB-Stop -	Unit	178.39 €
Ball-stop / Posts / Height 2 m			<i>Page 12 of the catalog</i>
PB02R08ST-NAR	Retention post - 2 m above ground - 80 x 80 x 2.5 mm ZN powder-coated - 2 m height wire mesh on lower part	Unit	355.10 €
PB02R08ST-NAI	Intermediate post - 2 m above ground - 80 x 80 x 2.5 mm ZN powder-coated - 2 m height wire mesh on lower part	Unit	173.41 €
PB02R08ST-NAD	End post - 2 m above ground - 80 x 80 x 2.5 mm ZN powder-coated - 2 m height wire mesh on lower part	Unit	250.82 €
PB02R08ST-NAA	Corner post - 2 m above ground - 80 x 80 x 2.5 mm ZN powder-coated - 2 m height wire mesh on lower part	Unit	355.10 €
PB02R08DB-NAI	Intermediate post - 2 m above ground - 80 x 80 x 2.5 mm ZN powder-coated - 2 m height dB-Stop panels	Unit	173.41 €
PB02060ST-NAR	Retention post - 2 m above ground - Ø 60 x 2 mm ZN powder-coated - 2 m height wire mesh on lower part	Unit	207.41 €
PB02060ST-NAI	Intermediate post - 2 m above ground - Ø 60 x 2 mm ZN powder-coated - 2 m height wire mesh on lower part	Unit	59.12 €
PB02060ST-NAD	End post - 2 m above ground - Ø 60 x 2 mm ZN powder-coated - 2 m height wire mesh on lower part	Unit	128.74 €
PB02060ST-NAA	Corner post - 2 m above ground - Ø 60 x 2 mm ZN powder-coated - 2 m height wire mesh on lower part	Unit	207.41 €
PB02060DB-NAI	Intermediate post - 2 m above ground - Ø 60 x 2 mm ZN powder-coated - 2 m height dB-Stop panels	Unit	111.46 €
PB02050ST-NAR	Retention post - 2 m above ground - Ø 50 x 2 mm ZN powder-coated - 2 m height wire mesh on lower part	Unit	70.70 €
PB02050ST-NAI	Intermediate post - 2 m above ground - Ø 50 x 2 mm ZN powder-coated - 2 m height wire mesh on lower part	Unit	53.35 €
PB02050ST-NAD	End post - 2 m above ground - Ø 50 x 2 mm ZN powder-coated - 2 m height wire mesh on lower part	Unit	55.72 €
PB02050ST-NAA	Corner post - 2 m above ground - Ø 50 x 2 mm ZN powder-coated - 2 m height wire mesh on lower part	Unit	70.70 €
Ball-stop / Posts / Wind Bracings			
PB111210	Steel plastic-coated wind-bracing Ø 90 mm - 10 m above ground + Ø 50 mm struts	Unit	342.09 €
PB111291	Steel plastic-coated wind-bracing Ø 90 mm - 9 m above ground + Ø 50 mm struts	Unit	342.09 €
PB111300	Steel plastic-coated wind-bracing Ø 90 mm - 8 m above ground + Ø 50 mm struts	Unit	327.14 €
PB111270	Steel plastic-coated wind-bracing post Ø 80 mm - 7 m above ground + Ø 50 mm struts	Unit	313.23 €
PB111287	Steel plastic-coated wind-bracing post Ø 80 mm - 6 m above ground + Ø 50 mm struts	Unit	226.35 €
PB111286	Steel plastic-coated wind-bracing post Ø 80 mm - 5 m above ground + Ø 50 mm struts	Unit	198.25 €
Ball-stop / Posts / Straining posts			
PB111400	Steel plastic-coated straining post Ø 90 mm - 10 m above ground + Ø 50 mm struts	Unit	501.93 €
PB111398	Steel plastic-coated straining post Ø 80 mm - 9 m above ground + Ø 50 mm struts	Unit	447.83 €
PB111380	Steel plastic-coated straining post Ø 80 mm - 8 m above ground + Ø 50 mm struts	Unit	364.39 €
PB111370	Steel plastic-coated straining post Ø 80 mm - 7 m above ground + Ø 50 mm struts	Unit	300.52 €
PB111360	Steel plastic-coated straining post Ø 80 mm - 6 m above ground	Unit	220.61 €
PB111350	Steel plastic-coated straining post Ø 80 mm - 5 m above ground	Unit	187.89 €
PB111340	Steel plastic-coated straining post Ø 50 mm - 4 m above ground	Unit	97.57 €
PB111330	Steel plastic-coated straining post Ø 50 mm - 3 m above ground	Unit	81.08 €
PB111320	Steel plastic-coated straining post Ø 50 mm - 2 m above ground - For wire mesh post H. 2 m	Unit	63.31 €
Ball-stop / Posts / Additional costs			<i>Page 13 of the catalog</i>
PB190502	Additional costs "dB-Stop" Ø 60 mm posts (5 per post)	Unit	66.55 €
PB190503	Additional costs "dB-Stop" Ø 76-80-89-102-114 mm posts (6 per post)	Unit	79.87 €
PB190501	Additional costs "dB-Stop" Ø 76-80-89-102-114 mm posts (5 per post)	Unit	66.55 €
PB190111	Additional costs welded rings (5 per post)	Unit	12.56 €
PB190108	Additional costs welded plates (5 per post)	Unit	16.58 €
PB190112	Additional costs grid fixation on shioplac + clips - For End posts	Unit	28.43 €
PB190113	Additional costs grid fixation on shioplac + clips - For intermediate and Corner posts	Unit	56.82 €
PB190101	Additional costs 1 U shape fixation clamp w.50 x d.50 x t.4 mm - Height from 0 to 0.5 m	Unit	45.43 €
PB190102	Additional costs 1 U shape fixation clamp w.50 x d.50 x t.4 mm - Height 0.5 m	Unit	37.90 €
PB190103	Additional costs 1 U shape fixation clamp w.50 x d.50 x t.4 mm - Height from 0.5 to 2 m	Unit	89.40 €
PB190104	Additional costs 1 U shape fixation clamp w.50 x d.50 x t.4 mm - Height 2 m	Unit	82.74 €
Ball-stop / Spreader bars			
PB111410	Steel powder-coated spreader bar Ø 50 mm - Custom made length - With bracing kit	Unité	251.46 €
PB111450	Adjustable Steel powder-coated spreader bar - Custom made - With bracing kit - Maximum breadth 800 mm	Unité	312.20 €
PB111430	Steel powder-coated spreader bar Ø 50 mm - Length 3 m - With bracing kit	Unit	129.53 €
PB111435	Steel powder-coated spreader bar Ø 50 mm - Length 2.5 m - With bracing kit	Unit	127.94 €
PB111420	Steel powder-coated spreader bar Ø 50 mm - Length 2 m - With bracing kit	Unit	126.37 €
PB111448	Steel powder-coated spreader bar Ø 50-55 mm - Adjustable from 3 to 3.80 m - With bracing kit - From 3 to 3.80 m interaxis post	Unit	205.55 €
PB111447	Steel powder-coated spreader bar Ø 50-55 mm - Adjustable from 2.30 to 3.10 m - With bracing kit - From 2.30 to 3.10 m interaxis post	Unit	202.40 €
PB111446	Steel powder-coated spreader bar Ø 50-55 mm - Adjustable from 1.80 to 2.60 m - With bracing kit - From 1.80 to 2.60 m interaxis post	Unit	199.24 €

References	Designation	Sold by	Price 2023 exc VAT
Ball-stop / Gates h. 2 m			<i>Page 20 of the catalog</i>
PB300720-BAR	Gate with bars infill 1 x 1.96 m - 180° opening - Net price, non-discountable	Unit	834.46 €
PB300721-BAR	Gate with bars infill 1.5 x 1.96 m - 180° opening - Net price, non-discountable	Unit	904.01 €
PB300722-BAR	Gate with bars infill 2 x 1.96 m - 180° opening - Net price, non-discountable	Unit	1 001.36 €
PB300724-BAR	Gate with bars infill 3 x 1.96 m - 2 leaf gate 180° opening - Net price, non-discountable	Unit	1 321.25 €
PB300725-BAR	Gate with bars infill 4 x 1.96 m - 2 leaf gate 180° opening - Net price, non-discountable	Unit	1 418.60 €
Ball-stop / Tennis fencing / Height 4 m			<i>Page 21 of the catalog</i>
TN117037	G+P steel End post 180 x 80 mm - 4 m above ground	Unit	391.98 €
TN117139	G+P steel Corner post 180 x 80 mm - 4 m above ground	Unit	409.14 €
TN117140	G+P steel 3 directions Corner post 180 x 80 mm - 4 m above ground	Unit	419.44 €
TN117548	G+P steel Intermediate post 180 x 80 mm - 4 m above ground + Welded wire guides	Unit	387.67 €
TN116037	G+P steel End post Ø 114 mm - 4 m above ground	Unit	279.74 €
TN116139	G+P steel Corner post Ø 114 mm - 4 m above ground	Unit	296.91 €
TN116140	G+P steel 3 directions Corner post Ø 114 mm - 4 m above ground	Unit	307.19 €
TN116548	G+P steel Intermediate post Ø 114 mm - 4 m above ground + Welded wire guides	Unit	275.43 €
TN115037	G+P steel End post Ø 102 mm - 4 m above ground	Unit	215.33 €
TN115139	G+P steel Corner post Ø 102 mm - 4 m above ground	Unit	232.51 €
TN115140	G+P steel 3 directions Corner post Ø 102 mm - 4 m above ground	Unit	242.82 €
TN115548	G+P steel Intermediate post Ø 102 mm - 4 m above ground + Welded wire guides	Unit	211.02 €
TN114037	G+P steel End post Ø 90 mm - 4 m above ground	Unit	167.47 €
TN114139	G+P steel Corner post Ø 90 mm - 4 m above ground	Unit	184.65 €
TN114140	G+P steel 3 directions Corner post Ø 90 mm - 4 m above ground	Unit	194.93 €
TN114548	G+P steel Intermediate post Ø 90 mm - 4 m above ground + Welded wire guides	Unit	163.15 €
TN112037	G+P steel End post Ø 80 mm - 4 m above ground	Unit	149.47 €
TN112139	G+P steel Corner post Ø 80 mm - 4 m above ground	Unit	165.50 €
TN112140	G+P steel 3 directions Corner post Ø 80 mm - 4 m above ground	Unit	175.15 €
TN112548	G+P steel Intermediate post Ø 80 mm - 4 m above ground + Welded wire guides	Unit	145.43 €
TN111037	G+P steel End post Ø 60 mm - 4 m above ground	Unit	138.36 €
TN111139	G+P steel Corner post Ø 60 mm - 4 m above ground	Unit	155.21 €
TN111140	G+P steel 3 directions Corner post Ø 60 mm - 4 m above ground	Unit	164.58 €
TN111548	G+P steel Intermediate post Ø 60 mm - 4 m above ground + Welded wire guides	Unit	134.61 €
TN111332	G+P steel straining post Ø 50 mm - 4 m above ground	Unit	102.87 €
TN111285	G+P steel wind-bracing Ø 60 mm - 4 m above ground	Unit	108.48 €
Ball-stop / Tennis fencing / Height 3.5 m			<i>Page 21 of the catalog</i>
TN117036	G+P steel End post 180 x 80 mm - 3.5 m above ground	Unit	341.33 €
TN117137	G+P steel Corner post 180 x 80 mm - 3.5 m above ground	Unit	363.90 €
TN117138	G+P steel 3 directions Corner post 180 x 80 mm - 3.5 m above ground	Unit	375.72 €
TN117547	G+P steel Intermediate post 180 x 80 mm - 3.5 m above ground + Welded wire guides	Unit	329.31 €
TN116036	G+P steel End post Ø 114 mm - 3.5 m above ground	Unit	238.15 €
TN116137	G+P steel Corner post Ø 114 mm - 3.5 m above ground	Unit	260.70 €
TN116138	G+P steel 3 directions Corner post Ø 114 mm - 3.5 m above ground	Unit	272.53 €
TN116547	G+P steel Intermediate post Ø 114 mm - 3.5 m above ground + Welded wire guides	Unit	226.11 €
TN115036	G+P steel End post Ø 102 mm - 3.5 m above ground	Unit	179.11 €
TN115137	G+P steel Corner post Ø 102 mm - 3.5 m above ground	Unit	201.65 €
TN115138	G+P steel 3 directions Corner post Ø 102 mm - 3.5 m above ground	Unit	213.48 €
TN115547	G+P steel Intermediate post Ø 102 mm - 3.5 m above ground + Welded wire guides	Unit	167.05 €
TN114036	G+P steel End post Ø 90 mm - 3.5 m above ground	Unit	135.57 €
TN114137	G+P steel Corner post Ø 90 mm - 3.5 m above ground	Unit	158.13 €
TN114138	G+P steel 3 directions Corner post Ø 90 mm - 3.5 m above ground	Unit	169.96 €
TN114547	G+P steel Intermediate post Ø 90 mm - 3.5 m above ground + Welded wire guides	Unit	123.55 €
TN112036	G+P steel End post Ø 80 mm - 3.5 m above ground	Unit	139.99 €

References	Designation	Sold by	Price 2023 exc VAT
TN112137	G+P steel Corner post Ø 80 mm - 3.5 m above ground	Unit	153.48 €
TN112138	G+P steel 3 directions Corner post Ø 80 mm - 3.5 m above ground	Unit	160.77 €
TN112547	G+P steel Intermediate post Ø 80 mm - 3.5 m above ground + Welded wire guides	Unit	132.78 €
TN111036	G+P steel End post Ø 60 mm - 3.5 m above ground	Unit	121.56 €
TN111137	G+P steel Corner post Ø 60 mm - 3.5 m above ground	Unit	143.96 €
TN111138	G+P steel 3 directions Corner post Ø 60 mm - 3.5 m above ground	Unit	151.40 €
TN111547	G+P steel Intermediate post Ø 60 mm - 3.5 m above ground + Welded wire guides	Unit	127.17 €
TN111331	G+P steel straining post Ø 50 mm - 3.5 m above ground	Unit	95.36 €

Ball-stop / Tennis fencing / Height 3 m

Page 21 of the catalog

TN117035	G+P steel End post 180 x 80 mm - 3 m above ground	Unit	326.72 €
TN117135	G+P steel Corner post 180 x 80 mm - 3 m above ground	Unit	349.28 €
TN117136	G+P steel 3 directions Corner post 180 x 80 mm - 3 m above ground	Unit	361.09 €
TN117546	G+P steel Intermediate post 180 x 80 mm - 3 m above ground + Welded wire guides	Unit	314.66 €
TN116035	G+P steel End post Ø 114 mm - 3 m above ground	Unit	229.98 €
TN116135	G+P steel Corner post Ø 114 mm - 3 m above ground	Unit	252.53 €
TN116136	G+P steel 3 directions Corner post Ø 114 mm - 3 m above ground	Unit	264.36 €
TN116546	G+P steel Intermediate post Ø 114 mm - 3 m above ground + Welded wire guides	Unit	217.95 €
TN115035	G+P steel End post Ø 102 mm - 3 m above ground	Unit	174.79 €
TN115135	G+P steel Corner post Ø 102 mm - 3 m above ground	Unit	197.34 €
TN115136	G+P steel 3 directions Corner post Ø 102 mm - 3 m above ground	Unit	209.17 €
TN115546	G+P steel Intermediate post Ø 102 mm - 3 m above ground + Welded wire guides	Unit	162.73 €
TN114035	G+P steel End post Ø 90 mm - 3 m above ground	Unit	134.35 €
TN114135	G+P steel Corner post Ø 90 mm - 3 m above ground	Unit	156.89 €
TN114136	G+P steel 3 directions Corner post Ø 90 mm - 3 m above ground	Unit	168.73 €
TN114546	G+P steel Intermediate post Ø 90 mm - 3 m above ground + Welded wire guides	Unit	122.32 €
TN112035	G+P steel End post Ø 80 mm - 3 m above ground	Unit	120.53 €
TN112135	G+P steel Corner post Ø 80 mm - 3 m above ground	Unit	141.61 €
TN112136	G+P steel 3 directions Corner post Ø 80 mm - 3 m above ground	Unit	152.66 €
TN112546	G+P steel Intermediate post Ø 80 mm - 3 m above ground + Welded wire guides	Unit	109.29 €
TN113035	G+P steel End post Ø 70 mm - 3 m above ground	Unit	112.58 €
TN113135	G+P steel Corner post Ø 70 mm - 3 m above ground	Unit	133.68 €
TN113136	G+P steel 3 directions Corner post Ø 70 mm - 3 m above ground	Unit	144.70 €
TN113546	G+P steel Intermediate post Ø 70 mm - 3 m above ground + Welded wire guides	Unit	101.33 €
TN111035	G+P steel End post Ø 60 mm - 3 m above ground	Unit	112.22 €
TN111135	G+P steel Corner post Ø 60 mm - 3 m above ground	Unit	134.61 €
TN111136	G+P steel 3 directions Corner post Ø 60 mm - 3 m above ground	Unit	143.96 €
TN111546	G+P steel Intermediate post Ø 60 mm - 3 m above ground + Welded wire guides	Unit	100.95 €
TN111530	G+P steel Intermediate post Ø 50 mm - 3 m above ground + Welded wire guides	Unit	92.23 €
TN111283	G+P steel wind-bracing Ø 60 mm - 3 m above ground	Unit	87.91 €
TN111330	G+P steel straining post Ø 50 mm - 3 m above ground	Unit	89.79 €
TN211330	Right arched G+P steel straining post Ø 50 mm - 3 m above ground	Unit	138.92 €
TN211331	Left arched G+P steel straining post Ø 50 mm - 3 m above ground	Unit	138.92 €
TN213035	G+P steel end post Ø 70 mm for arched straining post - 3 m above ground	Unit	118.13 €
TN213135	G+P steel Corner post Ø 70 mm for arched straining post - 3 m above ground	Unit	141.34 €
TN213136	G+P steel 3 directions Corner post Ø 70 mm for arched straining post - 3 m above ground	Unit	178.33 €

Ball-stop / Tennis fencing / Full kit

Page 21 of the catalog

TN080620	G+P steel conventional tennis fence 36 x 18 mm - H. 3 m above ground 6 rolls of twisted mesh + Square gate tube 40 x 40 mm 4 Corner posts Ø 60 mm, 8 straining posts, 26 Intermediate posts Ø 60 mm - Welded wire guides	Unit	7 369.39 €
TN080700	Kit of 10 reinforcing bars for standard tennis enclosure 36 x 18 m Hot galvanized steel	Unité	305.06 €

References	Designation	Sold by	Price 2023 exc VAT
Ball-stop / Tennis fencing / Door			<i>Page 21 of the catalog</i>
CLTNPOR32	2 leaves door + Framing + 2 straining posts for tennis fence Square tubes 40 x 40 mm - Thickness 2 mm - 2437 mm interaxis post	Unit	1 985.69 €
CLTNPOR33	Side door Ø 70 mm + framing for tennis fence Square tubes 40 x 40 mm - Thickness 2 mm - 1 275 mm interaxis post	Unit	1 117.61 €
CLTNPOR34	Sire or corner vandal proof door + framing for tennis fence Square tubes 40 x 40 mm - Thickness 2 mm - 1 257 mm interaxis post	Unit	Consult us
CLTNPOR35	Side vandal proof door with suction pad + framing for tennis fence Square tubes 40 x 40 mm - Thickness 2 mm - 1 257 mm interaxis post	Unit	Consult us
CLTNPOR36	Corner door for straight straining post + framing for tennis fence Square tubes 40 x 40 mm - Thickness 2 mm - 1 257 mm interaxis post	Unit	1 217.08 €
CLTNPOR37	Corner door for arched straining post + framing for tennis fence Square tubes 40 x 40 mm - Thickness 2 mm - 1 257 mm interaxis post	Unit	1 268.21 €
CLTNPOR38	Corner vandal proof door with suction pad for arched straining post + framing for tennis fence Square tubes 40 x 40 mm - Thickness 2 mm - 1 257 mm interaxis post	Unit	Consult us
CLTNPOR39	Corner door with suction pad for arched straining post + framing for tennis fence Square tubes 40 x 40 mm - Thickness 2 mm - 1 257 mm interaxis post	Unit	Consult us
CLTNPOR40	Corner vandal proof door with suction pad for straight straining post framing for tennis fence Square tubes 40 x 40 mm - Thickness 2 mm - 1 257 mm interaxis post	Unit	Consult us
CLTNPOR41	Corner door with suction pad for straight straining post + framing for tennis fence Square tubes 40 x 40 mm - Thickness 2 mm - 1 257 mm interaxis post	Unit	Consult us
CLTNPOR42	2 leaves door + framing for tennis fence Square tubes 40 x 40 mm - Thickness 2 mm - 2 437 mm interaxis post	Unit	1 985.69 €
Ball-stop / Ball-stop accessories / Collars / Ø 114 mm			
PB190210	Fixation collar straining post for Ø 114 mm	Unit	46.93 €
PB190208	Support collar tightener for Ø 114 mm - Tightener not included	Unit	26.42 €
PB190209	Support collar pulley for Ø 114 mm - With pulley	Unit	48.29 €
Ball-stop / Ball-stop accessories / Collars / Ø 102 mm			
PB190192	Fixation collar straining post for Ø 102 mm	Unit	46.93 €
PB190179	Support collar tightener for Ø 102 mm - Tightener not included	Unit	26.42 €
PB190191	Support collar pulley for Ø 102 mm - With pulley	Unit	48.29 €
Ball-stop / Ball-stop accessories / Collars / Ø 90 mm			
PB190184	Fixation collar ball-stops with clamps for Ø 90 mm	Unit	Consult us
PB190188	Fixation collar straining post for Ø 90 mm	Unit	30.08 €
PB190178	Support collar tightener for Ø 90 mm - Tightener not included	Unit	22.80 €
PB190183	Support collar pulley for Ø 90 mm - With pulley	Unit	39.63 €
Ball-stop / Ball-stop accessories / Collars / Ø 80 mm			
PB190187	Fixation collar straining post for Ø 80 mm	Unit	29.01 €
PB190177	Support collar tightener for Ø 80 mm - Tightener not included*	Unit	21.67 €
PB190182	Support collar pulley for Ø 80 mm - With pulley	Unit	37.81 €
Ball-stop / Ball-stop accessories / Collars / Ø 60 mm			
PB190186	Fixation collar straining post for Ø 60 mm	Unit	27.88 €
PB190176	Support collar tightener for Ø 60 mm - Tightener not included	Unit	20.68 €
PB190181	Support collar pulley for Ø 60 mm - With pulley	Unit	36.91 €
Ball-stop / Ball-stop accessories / Collars / Ø 50 mm			
PB190185	Fixation collar straining post for Ø 50 mm	Unit	26.57 €
PB190175	Support collar tightener for Ø 50 mm - Tightener not included	Unit	19.21 €
PB190180	Support collar pulley for Ø 50 mm - With pulley	Unit	35.45 €
Ball-stop / Ball-stop accessories / Split rings			<i>Page 13 of the catalog</i>
PB190172	White split ring by 3000 units	Unit	0.34 €
PB190171	Green split ring by 3000 units	Unit	0.34 €
PB190164	White split ring	Unit	0.41 €
PB190160	Green split ring	Unit	0.41 €
PB190167	Black split ring	Unit	0.41 €

References	Designation	Sold by	Price 2023 exc VAT
Ball-stop / Ball-stop accessories / Steel cable			<i>Page 13 of the catalog</i>
PB190202	Steel sheated cable Ø 5 mm reel length 2000 m - Green	linear m	0.94 €
PB190194	Steel sheated cable Ø 5 mm reel length 500 m - Green	linear m	0.95 €
PB190197	Steel sheated cable Ø 5 mm delivered by linear meter - Green	linear m	1.57 €
PB190195	Steel sheated cable Ø 5 mm - Translucent	linear m	1.57 €
PB190199	Steel sheated cable Ø 5 mm - White	linear m	1.57 €
PB190201	Steel sheated cable Ø 5 mm - Black	linear m	1.57 €
PB190203	Stainless steel sheathed cable Ø 5 mm - Translucent	linear m	4.25 €
Ball-stop / Ball-stop accessories / End-caps for tube			
PB190350	End-cap for Ø 114 mm tube	Unit	4.84 €
PB190345	End-cap for Ø 102 mm tube	Unit	4.71 €
PB190340	End-cap for Ø 90 mm tube	Unit	3.79 €
PB190336	End-cap for Ø 80 mm tube	Unit	3.69 €
PB190330	End-cap for Ø 60 mm tube	Unit	2.17 €
PB190325	End-cap for Ø 50 mm tube	Unit	1.61 €
Ball-stop / Ball-stop accessories			<i>Page 13 of the catalog</i>
2012096-01	Tensioning bars 1.05 m - Ø 8 mm - Inox 316 L	Unit	13.02 €
2012096-02	Tensioning bars 2.05 m - Ø 8 mm - Inox 316 L	Unit	26.00 €
2012096-03	Tensioning bars 3.05 m - Ø 8 mm - Inox 316 L	Unit	31.79 €
PB190205	Plate support pulley for wall fixations	Unit	29.12 €
PB190200	Plate support tightener with hook - Net attachment	Unit	25.52 €
PB190155	Ball-stop pulley Ø 62 mm	Unit	3.40 €
PB190130	Large tightener n°4 - Green	Unit	4.35 €
PB190131	Large tightener n°4 - White	Unit	4.35 €
PB190132	Large tightener n°4 - Black	Unit	4.35 €
PB190132	Large tightener n°4 - Galvanised	Unit	3.65 €
PB190121	Straight hook truck	Unit	1.60 €
PB190120	Cranked hook truck (top part)	Unit	1.77 €
PB190116	Black plastic cable guide + Screw	Unit	1.42 €
PB190100V	Green grommet with stainless steel hook (Ø 8 mm drilling)	Unit	1.00 €
PB190100N	Black grommet with stainless steel hook (Ø 8 mm drilling)	Unit	1.00 €
PB190100G	Grey grommet with stainless steel hook (Ø 8 mm drilling)	Unit	1.00 €
PB190100B	White grommet with stainless steel hook (Ø 8 mm drilling)	Unit	1.00 €
PB190151	U-shaped cable clamp in stainless steel 316 (Ø 5 mm cable)	Unit	3.09 €
PB190141	Stainless steel turnbuckle n°8 (2 rings)	Unit	15.55 €
PB190142	Stainless steel turnbuckle n°8 (ring/hook)	Unit	15.26 €
PB190140	Turnbuckle n°8	Unit	7.63 €
PB190162	Leaded braid 400 gr/m in PVC strip	linear m	15.88 €
PB190163	Leaded braid 200 gr/m in PVC strip	linear m	12.32 €
Ball-stop / Infill / Grid and welded wire panels			<i>Page 12 of the catalog</i>
PB111801	Grid roll 25 m h. 2 m - 3.9/4.4 mm wire - Galvanised	Unit	Consult us
PB111802	Grid roll 18 m h. 2 m - 3.9/4.4 mm wire - Green	Unit	Consult us
PB200075	Welded wire panel 2.51 m h. 2 m - 8/6/8 mm - Green	Unit	Consult us
PB200076	Welded wire panel 2.51 m h. 2 m - 8/6/8 mm - White	Unit	Consult us
Ball-stop / Infill / Windbreak - viewbreak (*)			<i>Page 13 of the catalog</i>
BVMON05C20	Windbreak mono PE -50% H. 2 m - Green - With PVC strip + Eyelets every 0.33 m - Steel s-hooks included	m ²	9.46 €
BVMON05C30	Windbreak mono PE -50% H. 3 m - Green - With PVC strip + Eyelets every 0.33 m - Steel s-hooks included	m ²	9.46 €
BVMON06C	Windbreak mono PE -65% H. 2 m - Green - With PVC strip + Eyelets every 0.33 m - Steel s-hooks included	m ²	10.02 €
BVBAND8C10	Viewbreak PE -80% H. 1 m - Green - With PVC strip + Eyelets every 0.33 m - Steel s-hooks included	m ²	12.16 €
BVBAND8C12	Viewbreak PE -80% H. 1.20 m - Green - With PVC strip + Eyelets every 0.33 m - Steel s-hooks included	m ²	12.16 €
BVBAND8C15	Viewbreak PE -80% H. 1.50 m - Green - With PVC strip + Eyelets every 0.33 m - Steel s-hooks included	m ²	12.16 €

(*) Additional costs for area < to 20 m² : 100% for area < to 5 m² ; 50% for area < to 10 m² ; 20% for area < to 20 m²
Non standard height additional costs : +10 % of the price of the standard size

References	Designation	Sold by	Price 2023 exc VAT
BVBAND8C18	Viewbreak PE -80% H. 1.80 m - Green - With PVC strip + Eyelets every 0.33 m - Steel s-hooks included	m ²	12.16 €
BVBAND8C20	Viewbreak PE -80% H. 2 m - Green - With PVC strip + Eyelets every 0.33 m - Steel s-hooks included	m ²	12.16 €
BVBAND8C30	Viewbreak PE -80% H. 3 m - Green - With PVC strip + Eyelets every 0.33 m - Steel s-hooks included	m ²	12.16 €
BACHE200G	Tarp 200 g/m²	m ²	8.30 €
BACHE600G	Tarp 600 g/m²	m ²	22.33 €
BVESSES	Steel s-hooks	Unit	0.38 €
BVCOLFIX	Bag of 100 units of fixation collars	Set	17.10 €
Ball-stop / Nets / Mesh 145 mm ^(*)			Page 12 of the catalog
FN297145-N	Ball-stop net PE Ø 3 mm - Black mesh 145 mm + Overlock	m ²	2.34 €
FN297145	Ball-stop net PE Ø 3 mm - Green mesh 145 mm + Overlock	m ²	2.34 €
FN420145	Ball-stop net PE Ø 2.5 mm - Green mesh 145 mm + Overlock	m ²	1.83 €
FN42N145	Ball-stop net PE Ø 2.5 mm - Black mesh 145 mm + Overlock	m ²	1.83 €
Ball-stop / Nets / Mesh 120 mm ^(*)			Page 12 of the catalog
FN420120	Ball-stop net PE Ø 2.5 mm - Green mesh 120 mm + Overlock	m ²	3.22 €
Ball-stop / Nets / Mesh 100 mm ^(*)			Page 12 of the catalog
FN297100-N	Ball-stop net PE Ø 3 mm - Black mesh 100 mm + Overlock	m ²	4.01 €
FN297100	Ball-stop net PE Ø 3 mm - Green mesh 100 mm + Overlock	m ²	4.36 €
FN420100	Ball-stop net PE Ø 2.5 mm - Green mesh 100 mm + Overlock	m ²	4.13 €
FN42N100	Ball-stop net PE Ø 2.5 mm - Black mesh 100 mm + Overlock	m ²	4.13 €
FT60B100	Ball-stop net PA Ø 2.5 mm - White mesh 100 mm + Overlock	m ²	Consult us
Ball-stop / Nets / Mesh 48 mm ^(*)			Page 12 of the catalog
FN297048	Ball-stop net PE Ø 3 mm - Green mesh 48 mm + Overlock	m ²	7.10 €
FN297048-N	Ball-stop net PE Ø 3 mm - Black mesh 48 mm + Overlock	m ²	7.10 €
FN420048	Ball-stop net PE Ø 2.5 mm - Green mesh 48 mm + Overlock	m ²	4.58 €
FN42N048	Ball-stop net PE Ø 2.5 mm - Black mesh 48 mm + Overlock	m ²	4.58 €
Ball-stop / Nets / Mesh 25 mm ^(*)			Page 12 of the catalog
FN520025	Ball-stop net PE Ø 2 mm - Green mesh 25 mm + Overlock	m ²	7.70 €
FN52N025	Ball-stop net PE Ø 2 mm - Black mesh 25 mm + Overlock	m ²	7.43 €
Handrail / Handrail dB-Lock			Page 16 of the catalog
MC500113	Aluminium handrail with ovoid post 60 x 80 mm - H. 1.10 m Aluminium powder-coated handrail - Spacing 2.50 m Aluminium elbows and t-connectors - "dB-Lock" system included	linear m	88.85 €
Handrail / Handrail dB-Stop			Page 17 of the catalog
MC300113	Aluminium handrail with steel post "dB-Stop" Ø 60 mm - H. 1.10 m - Aluminium powder-coated handrail - Spacing 2.50 m For wire mesh 2480 mm, aluminium handrail 2500 mm - "dB-Stop" fixing system included	linear m	48.93 €
MC300123	G+P steel handrail with steel post "dB-Stop" Ø 60 mm - H. 1.10 m - G+P steel handrail - Spacing 2.50 m For wire mesh 2480 mm, steel handrail 2500 mm - "dB-Stop" fixing system included	linear m	50.02 €
Handrail / Handrail wire mesh infill			Page 18 of the catalog
MC300115	Aluminium handrail with steel post link/welded plates - H. 1.10 m - Aluminium powder-coated handrail - Spacing 2.50 m For wire mesh, aluminium handrail 2500 mm	linear m	36.42 €
MC300166	Steel handrail with steel post link/welded plates - H. 1.10 m - Steel galvanized powder-coated handrail - Spacing 3 m For wire mesh, steel handrail 3000 mm	linear m	36.22 €
MC300165	Steel handrail with steel post link/welded plates - H. 1.10 m - Steel galvanized powder-coated handrail - Spacing 2.50 m For wire mesh, steel handrail 2500 mm	linear m	39.64 €
Handrail / Handrail no infill			Page 18 of the catalog
MC300105	Aluminium powder-coated handrail - Spacing 2.50 m - Tubes Ø 60 mm, thickness 2 mm	linear m	35.43 €
MC300125	G+P steel handrail - Spacing 3 m - Tubes Ø 60 mm, thickness 2 mm	linear m	33.18 €
MC300120	G+P steel handrail - Spacing 2.50 m - Tubes Ø 60 mm, thickness 2 mm	linear m	35.71 €
MC300135	Hot galvanized steel handrail - Spacing 3 m - Tubes Ø 60 mm, thickness 2 mm	linear m	29.28 €
MC300130	Hot galvanized handrail - Spacing 2.5 m - Tubes Ø 60 mm, thickness 2 mm	linear m	34.23 €
Handrail / Handrail spare parts / Corners			
MC300502	Raw aluminium adjustable Corner post - screw clamping + welded cap - For shiplap posts	Unit	57.88 €
MC300315	Raw aluminium adjustable Corner post + plastic cap	Unit	50.18 €

(*) Additional costs for area < to 20 m² : 100% for area < to 5 m² ; 50% for area < to 10 m² ; 20% for area < to 20 m²
Non standard height additional costs : +10 % of the price of the standard size

References	Designation	Sold by	Price 2023 exc VAT
MC300305	Raw aluminium Corner post at 90°	Unit	31.57 €
MC300501	Aluminium powder-coated adjustable Corner post - screw clamping + with plastic cap	Unit	54.56 €
MC300500	Aluminium powder-coated Corner post	Unit	37.22 €
Handrail / Handrail spare parts / Elbows			
MC300406	Raw aluminium female elbow	Unit	36.86 €
MC300405	Raw aluminium male elbow	Unit	36.86 €
MC300401	Powder-coated aluminium female elbow	Unit	41.25 €
MC300400	Powder-coated aluminium male elbow	Unit	41.25 €
Handrail / Handrail spare parts / T-connectors			
MC300223	Raw aluminium screw cross type t-connector	Unit	25.10 €
MC300221	Powder-coated aluminium screw cross type t-connector	Unit	29.49 €
MC300210	Monobloc raw aluminium screwed t-connector	Unit	11.99 €
MC300215	Monobloc powder-coated aluminium screwed t-connector	Unit	16.34 €
Handrail / Handrail spare parts / Others			
MC300325	Powder-coated aluminium base plate sealing	Unit	43.92 €
MC190110	Additional costs welded ring (3 per post)	Unit	10.52 €
Handrail / Gates h. 1.10 m / Bars infill			<i>Page 20 of the catalog</i>
MC300721-BAR	G+P steel handrail gate with bars infill H. 1.10 m - Width 1.5 m - 180° opening	Unit	885.09 €
MC300722-BAR	G+P steel handrail gate with bars infill H. 1.10 m - Width 2 m - 180° opening	Unit	909.11 €
MC300723-BAR	G+P steel handrail gate with bars infill H. 1.10 m - Width 2 m - 180° opening - 2 leafs gate	Unit	1 475.51 €
MC300724-BAR	G+P steel handrail gate with bars infill H. 1.10 m - Width 3 m - 180° opening - 2 leafs gate	Unit	1 593.69 €
MC300725-BAR	G+P steel handrail gate with bars infill H. 1.10 m - Width 4 m - 180° opening - 2 leafs gate	Unit	1 668.02 €
Handrail / Gates h. 1.10 m / Welded-wire infill			<i>Page 20 of the catalog</i>
MC301720-180	G+P steel handrail gate with grid infill 1 m - 180° opening - Double welded wire infill 8/6/8 mm	Unit	796.85 €
MC301721-180	G+P steel handrail gate with grid infill 1.5 m - 180° opening - Double welded wire infill 8/6/8 mm	Unit	885.09 €
MC301722-180	G+P steel handrail gate with grid infill 2 m - 180° opening - Double welded wire infill 8/6/8 mm	Unit	918.18 €
MC301724-180	G+P steel handrail gate with grid infill 3 m - 180° opening - 2 leafs gate - Double welded wire infill 8/6/8 mm	Unit	1 593.69 €
MC301725-180	G+P steel handrail gate with grid infill 4 m - 180° opening - 2 leafs gate - Double welded wire infill 8/6/8 mm	Unit	1 668.02 €
Handrail / Gates h. 1.10 m / No infill			
MC300610-180	G+P steel handrail gate no infill 1 m - 180° opening	Unit	249.40 €
MC300615-180	G+P steel handrail gate no infill 3 m - 180° opening	Unit	325.64 €
Handrail / Gates / Sliding gates			
MC300860	Sliding gate width 1 m - Padlock not included	Unit	93.06 €
MC300861	Sliding gate width 1.5 m - Padlock not included	Unit	98.77 €
MC300862	Sliding gate width 2 m - Padlock not included	Unit	106.42 €
MC300863	Sliding gate width 3 m - Padlock not included	Unit	110.35 €
Handrail / Handrail fitting accessories			
MC300688	Bichro stop for gate - Direct installation	Unit	98.67 €
Handrail / Handrail infill / Grid and welded wire panels			
MC200060	Welded wire panel 2.51 m h. 0.83 m - 8/6/8 mm - White	Unit	Consult us
MC200062	Welded wire panel 2.51 m h. 0.83 m - 8/6/8 mm - Green	Unit	Consult us
MC300740	Grid roll 18 m h. 1 m - 3.9/4.4 mm wire - Green	Unit	Consult us
MC300745	Grid roll 18 m h. 1 m - 4.4 mm wire - White	Unit	Consult us

➤ The Eurocode standard

Ball-stops enclosures

Post spacing 5 m - mesh 145 x Ø 2.5 - Ground roughness : IIIb

	5 m	6 m	7 m	8 m	9 m	10 m	11 m	12 m	13 m	14 m	15 m
ZONE 1	Ø 80 mm	Ø 80 mm	Ø 90 mm	Ø 102 mm	Ø 114 mm	Ø 114 mm	Ø 114 mm	On request			
ZONE 2	Ø 80 mm	Ø 90 mm	Ø 102 mm	Ø 102 mm	Ø 114 mm	Ø 114 mm	R 180 mm	"			
ZONE 3	Ø 80 mm	Ø 90 mm	Ø 102 mm	Ø 114 mm	Ø 114 mm	R180 mm	R 180 mm	"			
ZONE 4	Ø 80 mm	Ø 102 mm	Ø 102 mm	Ø 114 mm	Ø 114 mm	R 180 mm	R 180 mm	"			

Post spacing 6 m - mesh 145 x Ø 2.5 - Ground roughness : IIIb

	5 m	6 m	7 m	8 m	9 m	10 m	11 m	12 m	13 m	14 m	15 m
ZONE 1	Ø 80 mm	Ø 80 mm	Ø 102 mm	Ø 102 mm	Ø 114 mm	Ø 114 mm	R 180 mm	On request			
ZONE 2	Ø 80 mm	Ø 90 mm	Ø 102 mm	Ø 114 mm	Ø 114 mm	R 180 mm	R 180 mm	"			
ZONE 3	Ø 80 mm	Ø 102 mm	Ø 102 mm	Ø 114 mm	R180 mm	R 180 mm	R 180 mm	"			
ZONE 4	Ø 102 mm	Ø 114 mm	Ø 114 mm	R 180 mm	R 180 mm	R 180 mm	R 180 mm	"			

Post spacing 7.5 m + grid 4.4 / treillis 8/6/8 + posts Ø 50 mm - mesh 145 x 2.5 - Ground roughness : IIIb

	5 m	6 m	7 m	8 m	9 m	10 m	11 m	12 m	13 m	14 m	15 m
ZONE 1	Ø 80 mm	Ø 102 mm	Ø 102 mm	Ø 114 mm	Ø 114 mm	R 180 mm	R 180 mm	On request			
ZONE 2	Ø 90 mm	Ø 102 mm	Ø 114 mm	Ø 114 mm	R 180 mm	R 180 mm	R 180 mm	"			
ZONE 3	Ø 102 mm	Ø 102 mm	Ø 114 mm	R 180 mm	R 180 mm	R 180 mm	R 180 mm	"			
ZONE 4	Ø 102 mm	Ø 114 mm	Ø 114 mm	R 180 mm	R 180 mm	R 180 mm	B 102/90 mm	"			"
								Small post Ø 60 mm			

Tennis enclosures

	Wire mesh 2.4/2.9							
	3 m above ground						3.5 m above ground	4 m above ground
	Interaxis 3.60 m		Interaxis 3 m				Interaxis 3.60 m	
	Mesh 45 x 2.9 mm	Mesh 45 x 2.4 mm galva	Screen-break 50%	Screen-break 50% with wind-bracing	Screen-break 65%	Screen-break 65% with wind-bracing	Mesh 45 x 2.9 mm	Mesh 45 x 2.9 mm
Vents	Posts	Posts	Posts	Posts	Posts	Posts	Posts	Posts
ZONE 1 IIIb	70 x 2 mm	60 x 2 mm	102 x 2.5 mm	50 + 50	102 x 2.5 mm	50 + 50	70 x 2 mm	90 x 2 mm
ZONE 2 IIIb	70 x 2 mm	70 x 2 mm	102 x 2.5 mm	50 + 50	114 x 3 mm	50 + 50	80 x 2 mm	90 x 2 mm
ZONE 3 IIIb	80 x 2 mm	70 x 2 mm	102 x 2.5 mm	50 + 50	114 x 3 mm	60 + 50	90 x 2 mm	102 x 2.5 mm
ZONE 4 IIIb	102 x 2.5 mm	90 x 2 mm	114 x 3 mm	60 + 50	180 x 80 mm	60 + 50	102 x 2.5 mm	114 x 3 mm
ZONE 5 IIIb	114 x 3 mm	102 x 2.5 mm	180 x 80 mm	70 + 50	180 x 80 mm	70 + 50	114 x 3 mm	180 x 80 x 3 mm
ZONE 6 IIIb	60 x 2 mm	60 x 2 mm	80 x 2 mm	50 + 50	102 x 2.5 mm	50 + 50	70 x 2 mm	80 x 2 mm
ZONE 7 IIIb	102 x 2.5 mm	102 x 2.5 mm	180 x 80 mm	70 + 50	180 x 80 mm	70 + 50	114 x 3 mm	114 x 3 mm
ZONE 8 IIIb	102 x 2.5 mm	102 x 2.5 mm	180 x 80 mm	70 + 50	180 x 80 mm	70 + 50	114 x 3 mm	180 x 80 x 3 mm

What is the Eurocode standard?

- Eurocodes are European standards for the sizing and justification of building and civil engineering structures. As a manufacturer of sports equipment, we must comply with the Eurocode and all related standards.
- Metalu Plast guarantees that all proposals and quotations sent to customers comply with the Eurocode and related standards. At the customer's request and after final validation of the Metalu Plast quotes, Metalu Plast provides a calculation note containing all the project parameters:

Wind zone
Ground roughness
Height of the structure
Post spacing
Infill coefficient between posts

The following is a list of standards that apply to the manufacture and supply of all sports fences, particularly ball-stops and tennis fences:

- [1] Structural Eurocode - Basis for structural calculations (NF EN 1990:2003)
- [2] Structural Eurocode - Basis for structural calculations (National Annex to NF EN 1990)
- [3] Eurocode 1: Action on structures, Part 1-4 : General actions - Wind actions (NF EN 1991-1-4: 2005)
- [4] Eurocode 1: Action on structures, Part 1-4: General actions - Wind actions (National Annex to NF EN 1991-1-4: 2005)
- [5] Eurocode 3: Calculations of steel structures (NF EN 1993-1-1: 2005)
- [6] Eurocode 3: Calculations of steel structures (National Annex to NF EN 1993-1-1-1: 2007)
- [7] The standard NF EN 1090-2 and the standard NF EN 10025-2

➤ Color range



"Color" range

9 RAL colors without any added-value and 10 textured RAL colors



RAL 9010 (White)



RAL 6005 (Green)



RAL 5002 (Blue)



RAL 5015 (Blue)



Metalu Plast Grey



RAL 1023 (Yellow)



RAL 3000 (Red)



RAL 8014 (Brown)

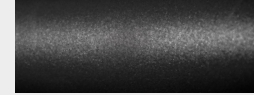


RAL 9005 (Black)

Textured mat RAL



Textured RAL 9010 (White)



Textured RAL 9005 (Black)



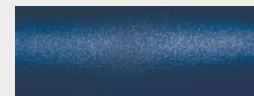
Textured RAL 3000 (Red)



Textured RAL 1028 (Orange)



Textured RAL 5015 (Blue)



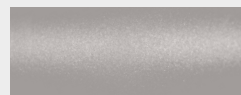
Textured RAL 5003 (Blue)



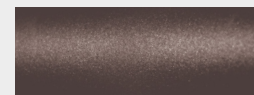
Textured RAL 6005 (Green)



Textured RAL 6019 (Green)



Textured RAL 9006 (Grey)



Textured RAL 7016 (Grey)



"Color +" range ⁽¹⁾

19 RAL glossy colors without any added-value under certain conditions and 10 textured RAL colors
Standard colors for multi-sports and soccer playground structures.
Optional colors for consoles and locker room's range.



RAL 5012 (Blue)



RAL 5017 (Blue)



RAL 7005 (Grey)



RAL 7016 (Grey)



RAL 6019 (Green)



RAL 6018 (Green)



RAL 2011 (Orange)



RAL 3003 (Red)



RAL 6029 (Green)



RAL 7036 (Grey)



"Color 300" range ⁽¹⁾

This ranges offer more than 300 colors (RAL) to realize the multi-sports playground of your choice.
For more informations please consult us.

⁽¹⁾Without any added-value under certain conditions, please consult us for further details about your project. Non contractual color chart, Colors are presented for your information. Please refer to a RAL color chart.

➤ **General terms and conditions**

To be photocopied and returned signed

1) Preliminary provisions

The present conditions cancel and replace any previous conditions and regulate the relationships between our Company and its Customers. All other documents issued by our Company, in particular catalogues, prospectuses, advertising material are for information only. By accepting an offer issued by our Company, the Customer accepts the present conditions. Consequently, the client states that he accepts expressly and without reserve these conditions, which have priority over all other documents issued by the Customer and all other agreements with the Customer, unless individual conditions have been agreed between the Parties. In the event that one of the Parties does not rely on any one of the present conditions at any given time, he shall not be deemed to have waived his right subsequently to rely on any of the said conditions whatsoever.

2) Order - quotation

Unless otherwise agreed, the offer shall be valid for one month from the date on which it is made. Orders placed and quotations requested by the Customer shall not be deemed to have been accepted by our Company until written agreement has been sent by the latter. The date, on which the contract comes into force, shall be the date printed on this agreement. No cancellation in whole or in part or any amendment in terms of quality or quantity of the order or quotation may be accepted without the written agreement of our Company. In the event that any cancellation or amendment is expressly accepted by our Company, this may give rise to an increase in the prices fixed and may cause fresh delays in delivery.

3) Delivery - Receipt

3.1 Delivery is by the postal service or by a haulage contractor at our premises. The deadlines for delivery and for the performance of the contract are provided for information purposes only depending on the supply and transport capacity of our Company, unless these fixed dates and times have been expressly agreed between our Company and the Customer. Unless such has been agreed, late delivery shall not give rise to damages or interest, withholding of payment or cancellation of any order or work in progress. Our Company is entitled to perform deliveries of work in whole or in part. If, for any reason whatsoever, our Company delivers, on one or several occasions, in whole or in part, the products, materials and equipment required for installation, these shall be in the care and custody of the Customer in accordance with the full force of the law.

3.2 Our products, irrespective of the

transport conditions, are transported at the risk of the Customer. Consequently, all risks, which may be suffered by the products with effect from the time of delivery, shall be borne by the Customer. The Customer must therefore take out appropriate insurance and bear the costs thereof. In all cases, it is the responsibility of the Customer in the event of non-conformity, visible defect, damage, default or delay to note these defects clearly and precisely on the haulage contractor's receipt document and to notify the haulage contractor by registered

letter with acknowledgement of receipt of its justified objection within two days, excluding public holidays, of receipt of the products. One copy of this statement must be sent to our Company within the same period. Claims regarding visible defects or the non-conformity of the services received as regards the products or the services ordered must be submitted in writing within two days of receipt of the services. In all cases the Customer shall be obliged to ensure receipt of the products or services. He must therefore be present at the premises and on the date of the delivery or receipt and must provide suitable handling equipment. Otherwise no claim may be entertained.

4) Liability

4.1 Our Company undertakes to perform the obligations defined in the quotation or the order in accordance with the standards and regulations in force. The sole certifications recognised are those of the independent inspection authorities commissioned by our Company. In this respect, the products are sold with the customary manufacturing tolerances. Our Company employs its best endeavours in performing services.

4.2 The products are supplied for the use, destination, technical features and assignment specified in the order or quotation.

The use of the products as provided or in combination with other products, the handling and installation of the products shall be at the risk of the Customer. The Customer undertakes to store and use the products in conformity with the regulations in force, the assembly and maintenance instructions issued and to comply with and cause others to comply with the entirety of his obligations as regards his own Customers. Our Company accepts no liability whatsoever for any attempt to repair the products by any third party or by the client himself; for normal wear and tear of its products; for malicious acts for defects and deteriorations of products delivered resulting from abnormal conditions or non-compliance with the conditions of storage, installation, use and maintenance subsequent to delivery of the products. More particularly, our Company does not accept liability for any breaches of conditions by the Customer as regards the final Customer. Consequently, all costs resulting from such degradations, in particular costs of repair, manufacture, installation, re-installation, transport etc. shall be borne by the Customer.

4.3 In the event of a claim based on visible or hidden defects or on the non-conformity of the products delivered with the products ordered, it is the responsibility of the Customer to provide all the evidence required with respect to the actual existence of the defects or anomalies discovered. He must allow our Company every facility for proceeding to confirmation of these defects or anomalies. No return shall be accepted for any reason whatsoever, without the prior written agreement of our Company. In the event that any defect or anomaly, for which the Customer submits evidence, arises from the fault of our Company, the obligation of the latter shall be restricted to replacing the defective quantities by similar products, excluding the costs of installation, re-installation and transport.

4.4 The Parties agree, having taken into account the nature of the products supplied, that when our Company is liable, for whatever reason whatsoever, redress shall apply solely to the direct, personal and certain damage incurred by the Customer to the express exclusion of any redress for any indirect and material damage, such as financial loss, damage to image, etc. The amount of damages and interest which our Company may be obliged to pay in the aforesaid conditions shall be in any case restricted to the amount of the order or quotation.

4.5 In the event of the occurrence of an event of force majeure, exceptional circumstances or outside causes, in particular by virtue of fire, flood, total or partial strikes, lock-outs, restrictions on movement, intentional damage, theft, changes in legislation, impossibility of obtaining raw materials, disruption to power supplies, malfunction or failure of electricity or telecommunications networks, etc. our Company shall be released ipso jure and without penalty from its duty to deliver with effect from the date of the occurrence of the events and undertakes to notify the Customer at the earliest opportunity.

4.6 As part of the sale of its products, Metalu Plast grants its customers a contractual guarantee to cover the cost of repair, refurbishment of its products under the conditions defined in the annex of these terms.

4.7 The Customer may also be offered the underwriting of optional commercial guarantees. The duration, price and individual conditions of these guarantees are available on request by the client and can be provided with the quotation.

5) Prices - Payment

5.1 Our Company's prices are those in force at the time of the order or quotation. They may nevertheless be amended at any time, subject to 7 days' notice, in particular in the case of a significant variation in the cost of the raw materials.

5.2 Invoices are payable within 30 days at the end of the month. No discount shall be granted for payment in advance. A claim regarding the quality of a product may not suspend payment unless proof of deficiency is submitted prior to the due date of the invoice and shall apply solely to the invoiced value of the products concerned.

5.3 In the case of late payment our Company may suspend all orders or work in progress, without prejudice to any other course of action. Penalties for arrears at a legal rate five times the legal interest rate shall be applied in the case where the sums due would be paid subsequent to the date of payment stated on the invoice. These penalty charges shall not be due until receipt of a formal demand. To this is added the fixed charge of € 40.00 (forty Euros) for recovery costs.

6) Collaboration - Independence

6.1 The Customer must provide to our6) Collaboration – Indépendance Company all the information required for it to carry out its obligations. This information must be sufficiently explicit to allow our Company to estimate its bid. In this respect, the Customer shall remain liable for the content and the accuracy of the information, which he communicates to our Company and shall

guarantee the latter against any legal action, which may arise from the said information. The Customer must amend any data, which he considers not in compliance with his order, in order to allow our Company to revise its bid in consequence.

6.2 Our Company reserves the right, as an independent company, to subcontract the order or quotation in whole or in part.

7) Non-disclosure - Intellectual property

7.1 Our Company and the Customer mutually undertake to maintain the strictest confidentiality as regards all information, which they may learn during the performance of the obligations contained in the purchase orders or quotations. The Parties undertake to refrain from communicating to third parties, unless compelled to do so by law, the information, which has become known to them by reason of the duties, which are the object of the present contract. They undertake to cause their staff and employees to comply strictly with this duty.

7.2 The studies, projects and documents of any nature, submitted or sent by our Company shall remain its material and intellectual property. They must be returned at its request.

8) Reservation of Title

The products sold by our Company shall remain its property until payment in full of the sale price, costs, interest and additional costs. However, the risks are transferred on delivery. The Customer gives his personal undertaking to our Company that he shall refrain from disposing, by any means whatsoever, either in full ownership or as a pledge, of the products purchased. In any case, the products stored with the client shall be deemed not to have been paid for. In the event of resale of the products by the Customers, either with or without further processing, the Customer undertakes to transfer to our Company the price paid by the sub-purchasers up to the limit of the price of the products remaining to be paid. In case of default in payment, our Company may, without any loss of any other rights, demand by registered letter with acknowledgement of receipt the return of the products at the cost and risk of the Customer. Any legal and Court costs shall also be borne by the Customer.

9) Court of jurisdiction

In the case of a legal dispute, the Parties shall attempt to come to amicable agreement within 10 days following the date on which the said dispute arose. In default of such an agreement, all disputes with regard to the present contract shall be submitted to the jurisdiction of the Caen Commercial Court, even in the case of a third party appeal or multiplicity of respondents.

Signature and stamp of the company

Headquarter:

ZI des Breholles - 14540 Soliers - France

Customer service: +33 (0)2 31 23 22 00

ENCLOSURES PRICES 2023

Applicable from 13 | 03 | 2023

HEADQUARTER - FRANCE

ZI des Breholles
14540 Soliers
+33 (0)2 31 23 22 00

RHÔNES-ALPES AGENCY - FRANCE

13 ZA du Buisson rond
38460 Villemoirieu
+33 (0)4 74 94 12 29

info@metalu-plast.com
www.metalu-plast.com



THE LABELS : Metalu Plast has two essential labels: the label Authorised Economic Operator, which is a guarantee with the customs services and allows to facilitate international exchanges, and the label Origine France Garantie, which is a proof of production quality.

THE NETWORKS : Metalu Plast is a member of two company networks. The Collectif Football France, which federates French companies offering services in the field of soccer. As well as the Economic Interest Grouping: France Sport Expertise, which regroups the main economic actors of French sport.



METALU PLAST
Much more than sport

[Back to table of contents](#) 